

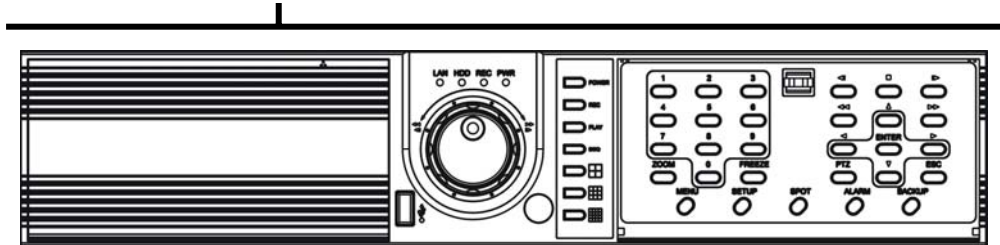
Quick Start Guide

ULTRA CCTV TIGON 1648 Digital Video Recorder

Open the CD DISC for

1. Complete user and installation manual.
2. Central Management Software.
3. Remote Viewing AP Software.






Power: Power On / Off switch

REC: Recording

PLAY: Playback

SEQ.: Channel sequence

 Split screen selection

0 ~ 9: Channel select





Zoom: Live zoom (2x)

FREEZE: Freezing live image

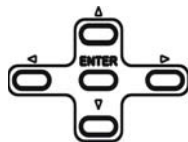
MENU: Shortcut of frequently use functions

Setup: Enter setup OSD menu

Spot: Activate Call monitor. Quick Setup (Sequence ON/OFF, Fixed camera)

 Frame by frame reverse |  Frame by frame forward  Fast reverse  Fast forward

 Stop playback



Direction button up/down/left/right
Enter button

PTZ: Enter to PTZ control mode

ESC: Exit menu

Alarm : Alarm output force control

Backup: Enter to backup mode

System rear connection detail

1) Video Source Connection



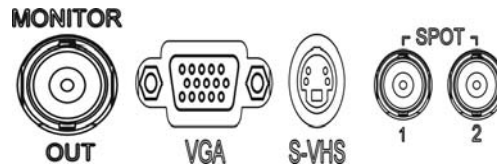
It connects video sources (camera image) to BNC connector via cable.

2) LOOP OUT Connection

BNC connector of LOOP OUT can be used as output to other device's input.

Caution : It may cause low quality of picture when connecting disconnected cable from any device to LOOP OUT BNC.

3) Monitor Connection

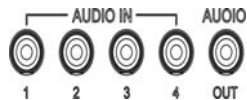


CVBS OUT/SPOT : It connects normal CCTV CRT monitor.

S-VHS : It connects monitor that supports S-VHS(S-VIDEO)

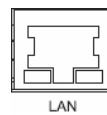
VGA : It connects PC monitor or LCD monitor (not supporting DVI)

4) Audio Connection



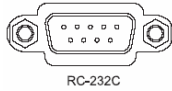
It connects audio source (mic) to audio input of RCA and connects speaker to audio output.

5) Network Connection



It supports 10/100 BaseT, connects Cat5 cable with RJ-45

6) RS232 port Connection.



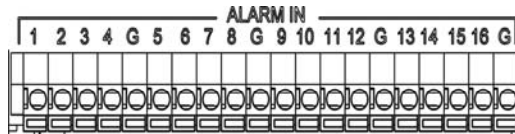
Reserve for technical support

7) USB port Connection



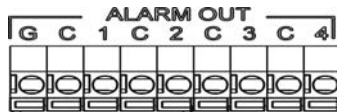
Both USB port support USB devices such as USB mouse, USB external HDD and USB thumb drive

8) ALARM IN (SENSOR) Connection



Remark : Max 6V/50mA

9) ALARM OUT Connection



* Alarm output 1~4CH
Support either NC or NO
Remark: Max24V/2A

10) Factory Reset Switch and NTSC/PAL system Switch



Factory Reset Switch

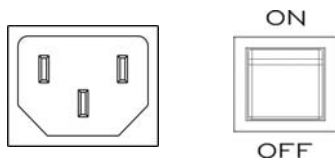
Press the factory reset switch located at the left side of NTSC/PAL switch to return to factory default setup values.

This reset switch should be pressed during power on. After OSD prompts "Factory reset detected" message, then you can release the switch. The booting procedure would go on under resetting setup values

Turn off the DVR before you do the NTSC/PAL system change.
Restart the DVR again after the system mode changed is done.

North America: NTSC
Europe: PAL

11) Power Connection and power switcher

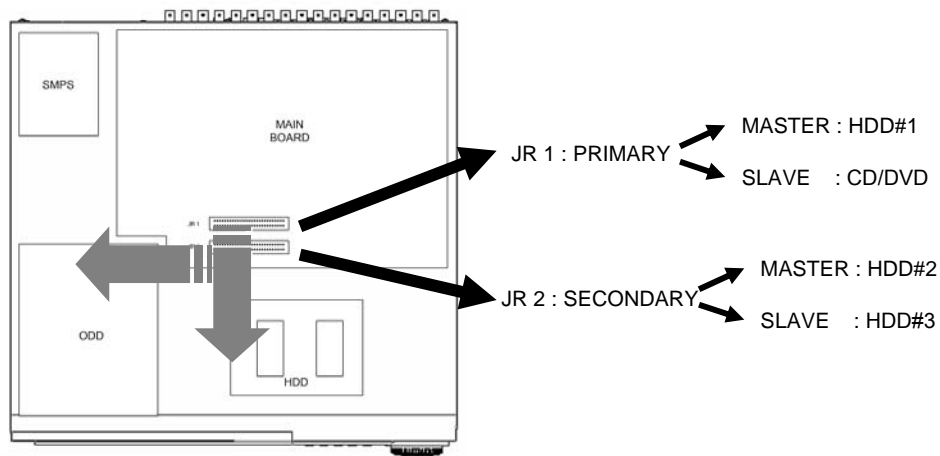


Installation Guide for HDD & CD-RW/DVR-RW devices

You must set the hard drive Master and Slave jumper properly according to Hard drive manufacturer's instructions to prevent system error and data loss.

Description

1. CD-RW/DVD-RW devices should be installed as "Primary Slave".
2. First HDD for system needs to be installed as "Primary Master".



Guide Chart for installing several HDDs

| Installed | HDD | HDD | | System | CD-RW/ DVD-RW Devices | |
|-----------|-------|------------------|-----------|--------|-----------------------|-----------|
| | | IDE | Connector | | IDE | Connector |
| HDD x 1 | HDD#1 | PRIMARY MASTER | JR 1 | SYSTEM | PRIMARY SLAVE | JR 1 |
| HDD x 2 | HDD#1 | PRIMARY MASTER | JR 1 | SYSTEM | | |
| | HDD#2 | SECONDARY MASTER | JR 2 | | | |
| HDD x 3 | HDD#1 | PRIMARY MASTER | JR 1 | SYSTEM | | |
| | HDD#2 | SECONDARY MASTER | JR 2 | | | |
| | HDD#3 | SECONDARY SLAVE | JR 2 | | | |

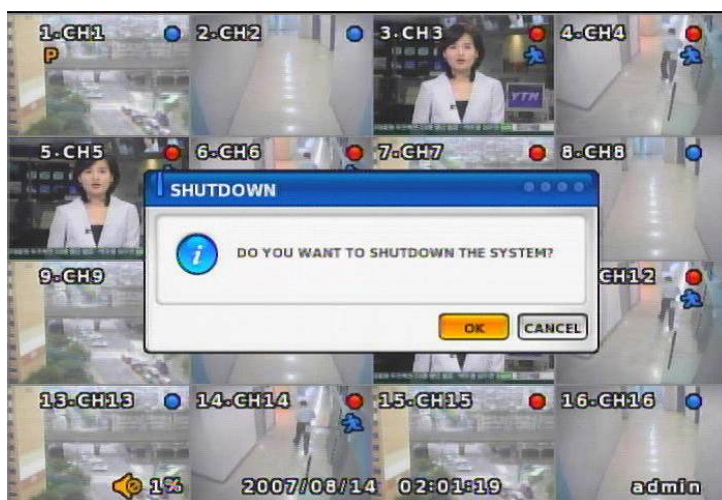
System On

- Put the power to the DVR.
- Turn on the power switch at the rear
- It takes about 100 seconds to boot (It may take more when network cable isn't connected)

System Shutdown

1. Press Power button, the shutdown menu appears, select "OK" to shut down the system.
2. Or select [SETUP > SYSTEM > SYSTEM SHUTDOWN] to shutdown the system.

Remark: It takes around 30 seconds to complete the shutdown procedure.



on Screen



① OSD :

<Screen Indication>

Top-Left : Camera title
P – Pan/tilt (PTZ control)
A – Audio

Top-Right : Record mode (Blue-Normal, Red-Event)
Motion status

Central : Video Loss, Hidden Camera

② Status Bar

: DVR status Indication
(Backup, HDD usage, Current Time, SEQUENCE, FREEZE, Login info. etc)

SETUP SCREEN**SYSTEM SETUP**

INFORMATION: To show DVR information

DATE/TIME : Setup date and time

DISK : Show the HDD status and format HDD

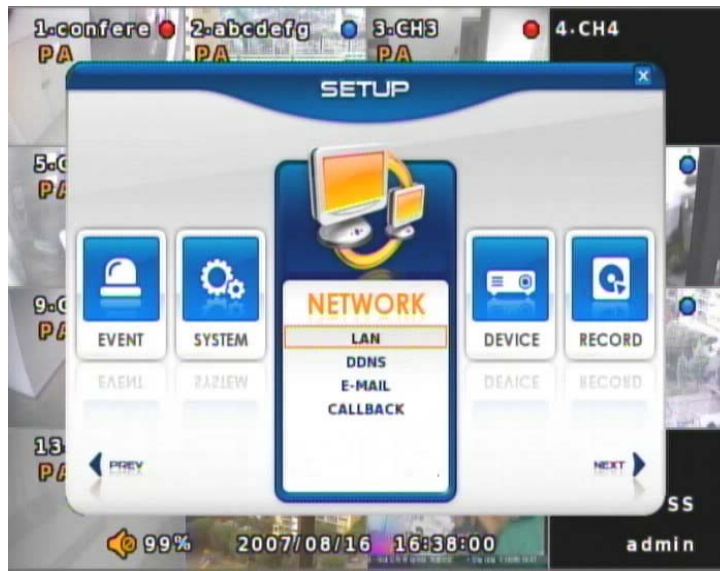
USER : User login ID and password setup

LOG : System operation information

LOGOUT : Logout system

SYSTEM SHUTDOWN: To shut down DVR

Remark: It takes more than 10 seconds to initialize (delete) the LOG information

NETWORK**NETWORK SETUP**

LAN : IP setup

DDNS : DDNS setup

E-MAIL: Setup E-mail address for event message

CALLBACK: Setup computer IP for event message

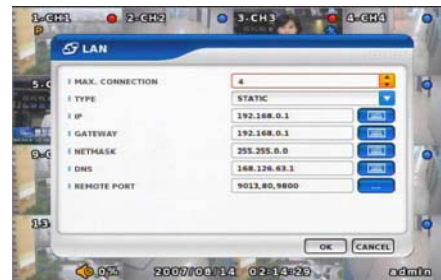
LAN

MAX CONNECTION

Up to 7 users

STATIC TYPE

For STATIC IP selection, settings for IP, GATEWAY, NETMASK have to be setup manually.



DHCP TYPE

For automatic DHCP IP selection, users only need to set up the DNS data.

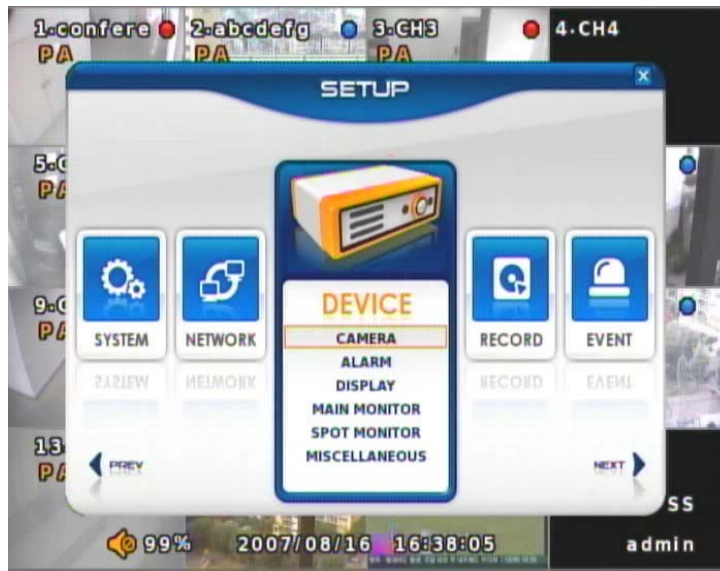
(DHCP operation mode must be structured under IP sharing device)



ADSL TYPE

Please check your local ISP for the your ID and password.



DEVICE**DEVICE SETUP**

- CAMERA : Camera setup
- ALARM : Alarm setup
- DISPLAY: On screen indication setup
- MAIN MONITOR: Main monitor setup
- SPOT MONITOR: Call monitor setup
- MISCELLANEOUS: Key tone and keyboard

RECORD**RECORD SETUP**

RECORD POLICY: HDD status setup when recording is full

RECORD : Recording setup (resolution, recording status, alarm, motion etc)

RECORD POLICY

HDD status setup when recording is full
 - Two types (Single Record, Overwrite)

**RECORD**

Recording setup for each camera

Remark:

Under half D1, the aspect ratio of local AVI backup will be adjust to 8:3

RECORD MODE

Set up record type.
 Default as OFF record mode.

**NORMAL/EVENT RECORD FPS**

Recording frame rate setup

NORMAL/EVENT RECORD QUALITY

Recording quality setup

SCHEDULE

Schedule recording setup



EVENT**EVENT SETUP**

- MOTION : Motion setup
- SENSOR: NO/NC setup
- VIDEO LOSS: Video loss detection setup
- SYSTEM: Event action setup

SEARCH



- ① Playback Screen : Video playback screen
- ② Playback Time : Playback Time Display
- ③ Display screen indication:

Playback Icon

Pause (II)

Playback (▶)

Multiple Playback(▶▶, ▶▶▶, ▶▶▶▶)

SEARCH MENU



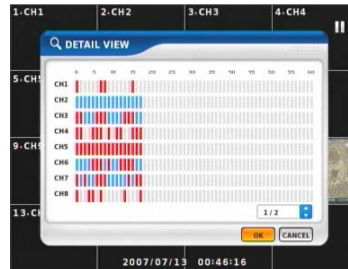
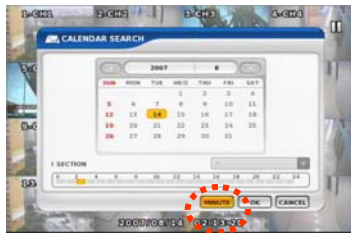
DISPLAY

Select screen division mode. (1,4,9,16 split screen)

CALENDAR SEARCH

Select date , hour, minutes, seconds in calendar search.

When you click MINUTE, you can find the specific record status under minute base



FIRST

Move to the beginning of the recorded data.

LAST

Move to the end of the recorded data.

BOOKMARK

When you set up a Bookmark time, this time will be set as the starting time during back up.



PLAYBACK USER INTERFACE

Playback buttons appears when locate the mouse pointer at the bottom of screen



SEARCH KEY

PLAY/PAUSE : Press PLAY to start from the position that was stopped from previous playback

◀ | Step backward / calendar search in live mode | ▶ Step forward / Event search in live mode

◀◀ Fast backward / Beginning of record time in live mode ▶▶ Fast forward / Last record time in live mode

■ Stop playback (Return to Live Display)

DEVICE

Search for internal record disks or external Backup devices.

LOCAL DEVICE

Search the data of internal DISK.

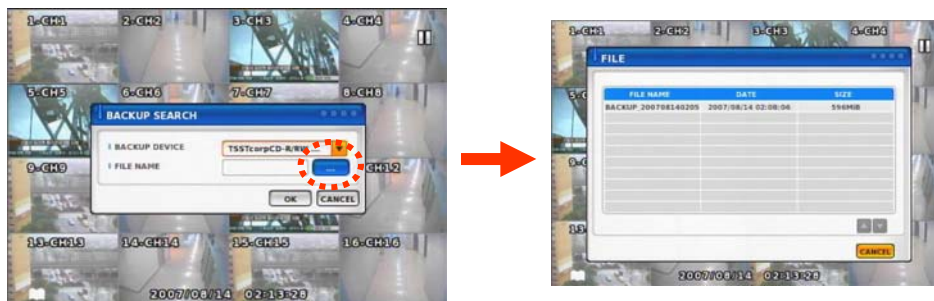


BACKUP DEVICE

Search backup device (Select when you play the backup data.)

If there are various back up devices , you can select a specific one .

It only supports DVD +R/-R and CD RW discs for backup



If you can not play the AVI file from backup, please visit Xvid web site at <http://www.xvid.org> to download the Xvid codec for installation.

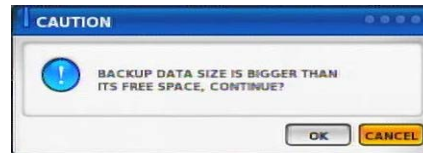
BACKUP

Select backup data.

1) Backup Device Search



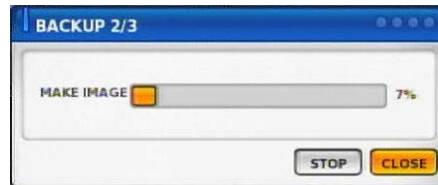
4) Warning when data size is over



2) Select data to backup



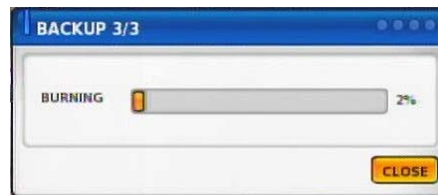
5) Transfer Image after pressing OK.



3) Calculate data size



6) Burning to CD



It would block remote search during local backup procedure.

REMOTE



<REMOTE PROGRAM IS?>

With connected to DVR remotely, it is to perform Remote Monitoring, Remote Search, Remote Backup etc. (Please install remote program from the program CD)

Environment conditions for Remote Program

1. INTEL P-4
2. 256M or higher main memory(512M recommend)
3. WINDOWS O/S(WIN 2000, XP, Vista(32bit))
4. 32MB VGA card supports RGB (ATI series recommend)
5. At least 10Mbps network speed (Max 100Mbps support)

Please note that some buttons and graphics may not be activated at this moment. Those inactivated buttons will be used later when system upgrades and expands
 If the viewer opens on IE, user needs to put connection IP on
 Select Internet Options → Security → Trusted sites
 ADD this website to the zone

① **Connection information and Button**



Shows DVR's name, IP address and connection status.

DVR connection button.



Add : Enter IP address and user authentication to connect DVR

Modify : Modify IP address and user authentication of the existing list

Delete : Delete existing use.

<DVR Connection Window>

DVR name :

Specify a name that you can easily identify.

Address :

Specify assigned IP address to connect DVR (Type the Host name of REAL IP or DDNS.)

<New Connection/Modify Dialogue Window>

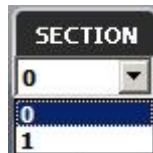
Remote Search



1 Playback Display



2 SECTION

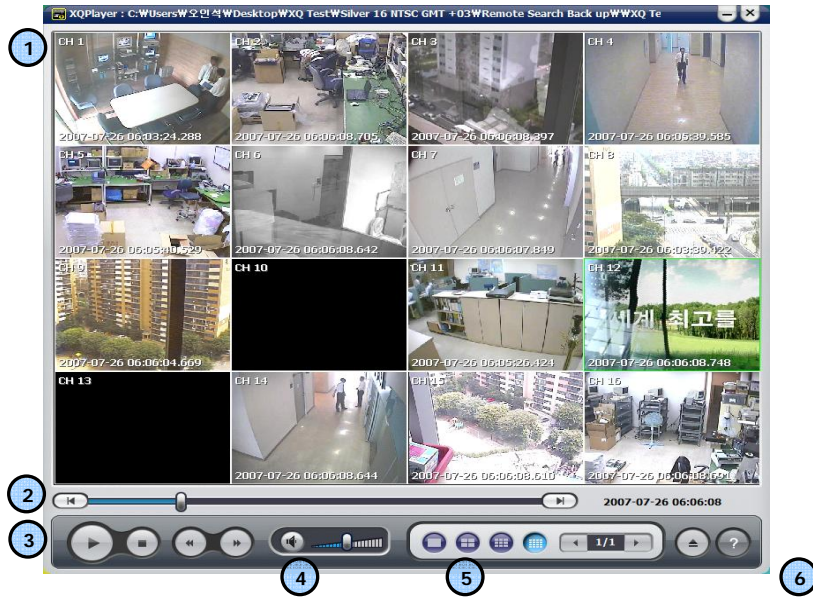


Selects section

Section is created when Date/Time is changed to former time. Former Date/Time will be kept in section 0. Newly set Date/Time will be kept in section 1.....

**Only one remote-playback connection is allowed

PLAYER



1 Search screen



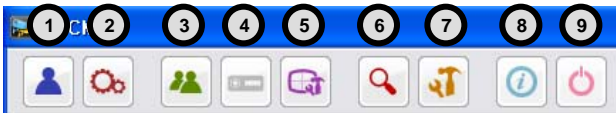
2 Starting/End



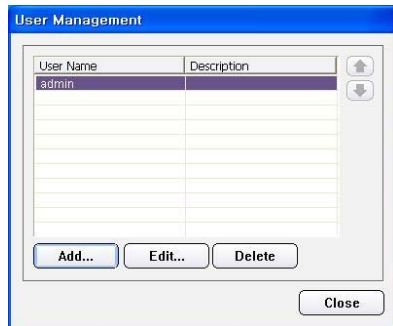
CMS Main screen



1 Function button



1 User Management



Add, edit, delete of CMS account.

- Add: add CMS user
- Edit: revise user ID, PASSWORD
- Delete: delete user

▣ CMS System Requirements

| | |
|--------------|--|
| OS | Win 2000 / Win XP / Win Vista |
| CPU | INTEL P-4 2.4Ghz or over(recommendsP-4 3Ghz,over) |
| Main Memory | 512MByte or over (recommends 1Gbyte,over) |
| Video Memory | 64M over supports RGB (recommends 128Mbyte over) |
| Resolution | 1024*768 over |
| Ethernet | 10/100 |
| Protocol | TCP/IP |

Open the CD DISC for

- 1. Complete user and installation manual.**
- 2. Central Management Software.**
- 3. Remote Viewing AP Software.**