

# **User's Manual**

## **ULTRA CCTV**

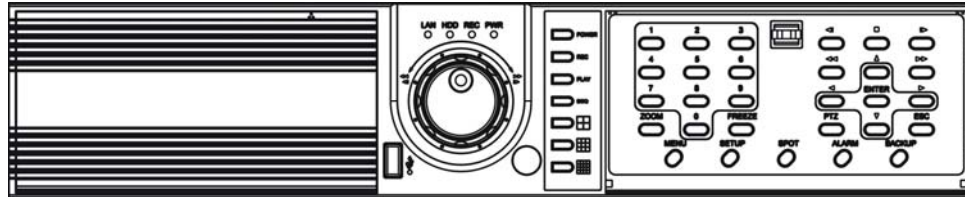
### **TIGON 1648**

#### **Digital Video Recorder**

Open the CD DISC for

1. Complete user and installation manual.
2. Central Management Software.
3. Remote Viewing AP Software.






Power: Power On / Off switch

REC: Recording

PLAY: Playback

SEQ.: Channel sequence

 Split screen selection

0 ~ 9: Channel select




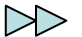
Zoom: Live zoom (2x)


FREEZE: Freezing live image

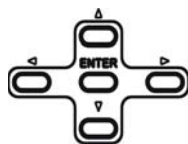
MENU: Shortcut of frequently use functions

Setup: Enter setup OSD menu

Spot: Activate Call monitor. Quick Setup (Sequence ON/OFF, Fixed camera)

 Frame by frame reverse |  Frame by frame forward  Fast reverse  Fast forward

 Stop playback



Direction button up/down/left/right  
Enter button

PTZ: Enter to PTZ control mode

ESC: Exit menu

Alarm : Alarm output force control

Backup: Enter to backup mode

**System rear connection detail**

1) Video Source Connection



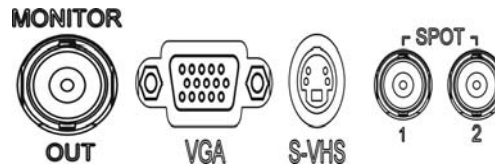
It connects video sources (camera image) to BNC connector via cable.

2) LOOP OUT Connection

BNC connector of LOOP OUT can be used as output to other device's input.

Caution : It may cause low quality of picture when connecting disconnected cable from any device to LOOP OUT BNC.

3) Monitor Connection

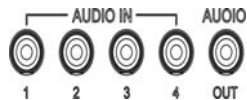


CVBS OUT/SPOT : It connects normal CCTV CRT monitor.

S-VHS : It connects monitor that supports S-VHS(S-VIDEO)

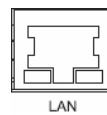
VGA : It connects PC monitor or LCD monitor (not supporting DVI)

4) Audio Connection



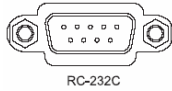
It connects audio source (mic) to audio input of RCA and connects speaker to audio output.

5) Network Connection



It supports 10/100 BaseT, connects Cat5 cable with RJ-45

6) RS232 port Connection.



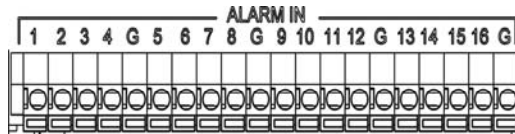
Reserve for technical support

7) USB port Connection



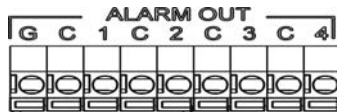
Both USB port support USB devices such as USB mouse, USB external HDD and USB thumb drive

8) ALARM IN (SENSOR) Connection



Remark : Max 6V/50mA

9) ALARM OUT Connection



\* Alarm output 1~4CH  
Support either NC or NO  
Remark: Max24V/2A

---

#### 10) Factory Reset Switch and NTSC/PAL system Switch



##### Factory Reset Switch

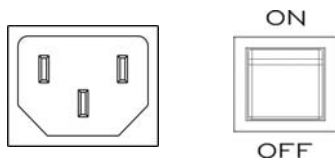
Press the factory reset switch located at the left side of NTSC/PAL switch to return to factory default setup values.

This reset switch should be pressed during power on. After OSD prompts "Factory reset detected" message, then you can release the switch. The booting procedure would go on under resetting setup values

Turn off the DVR before you do the NTSC/PAL system change.  
Restart the DVR again after the system mode changed is done.

North America: NTSC  
Europe: PAL

#### 11) Power Connection and power switcher

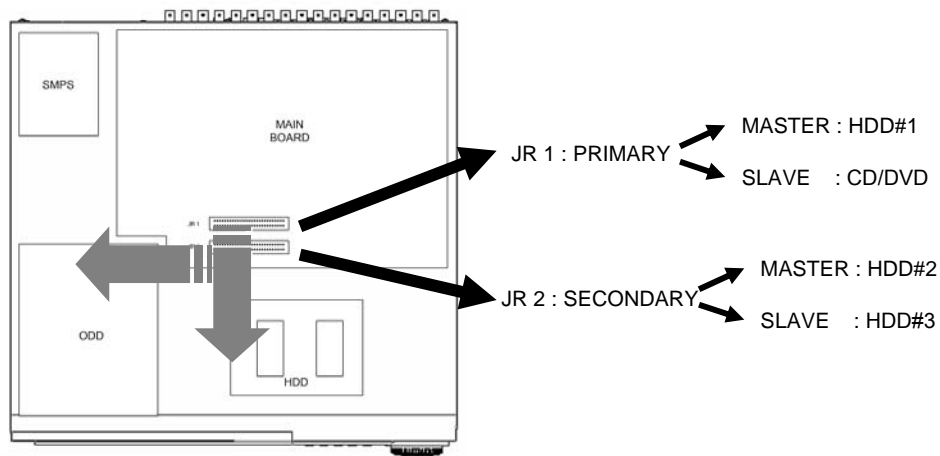


## Installation Guide for HDD & CD-RW/DVR-RW devices

You must set the hard drive Master and Slave jumper properly according to Hard drive manufacturer's instructions to prevent system error and data loss.

### Description

1. CD-RW/DVD-RW devices should be installed as "Primary Slave".
2. First HDD for system needs to be installed as "Primary Master".



### Guide Chart for installing several HDDs

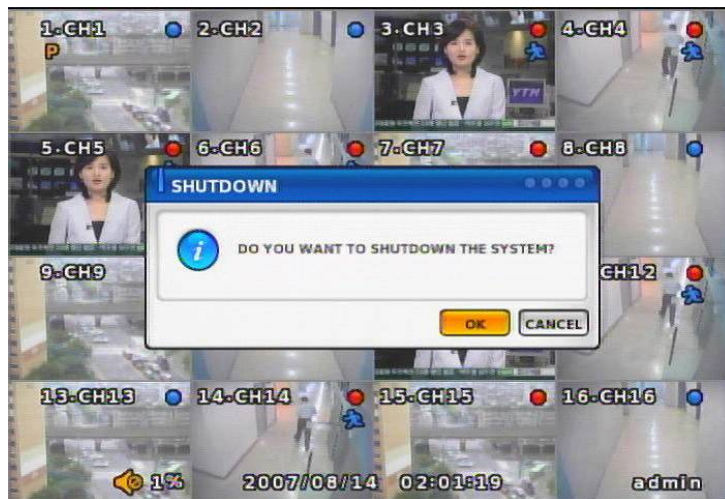
Installed	HDD	HDD		System	CD-RW/ DVD-RW Devices	
		IDE	Connector		IDE	Connector
HDD x 1	HDD#1	PRIMARY MASTER	JR 1	SYSTEM	PRIMARY SLAVE	JR 1
HDD x 2	HDD#1	PRIMARY MASTER	JR 1	SYSTEM		
	HDD#2	SECONDARY MASTER	JR 2			
HDD x 3	HDD#1	PRIMARY MASTER	JR 1	SYSTEM		
	HDD#2	SECONDARY MASTER	JR 2			
	HDD#3	SECONDARY SLAVE	JR 2			

### System On

- Put the power to the DVR.
- Turn on the power switch at the rear and press power button in front.
- It takes about 100 seconds to boot (It may take more when network cable isn't connected)

### System Shutdown

- Press Power button, then shutdown menu appears. Enter power button to shutdown system.
- Or select [SETUP > SYSTEM > SYSTEM SHUTDOWN] to shutdown system.
- It takes 30 seconds to shutdown.



on Screen



① OSD :

<Screen Indication>

Top-Left : Camera title  
P – Pan/tilt (PTZ control)  
A – Audio

Top-Right : Record mode (Blue-Normal, Red-Event)  
Motion status

Central : Video Loss, Hidden Camera

② Status Bar

: DVR status Indication  
(Backup, HDD usage, Current Time, SEQUENCE, FREEZE, Login info. etc)



### Screen Split

Press DISPLAY button or mouse menu: changed on 1 -> 4 -> 9 -> 16 by turn



### Direct Channel

- 1) Press channel No. on the remote control or front panel.
  - 2) Click the screen to watch specific channel using mouse.
- \*\* Pressing No.1 button responds a bit delayed to wait a possible signal input of No.10-16 (approx 2.5 seconds)

#### LOG IN

Login to menu for setup

Default: ID – **admin**

PASSWORD - **1**

The screenshot shows a 'LOGIN' window with a blue header. It contains two input fields: 'USER NAME' with the text 'admin' and a dropdown arrow, and 'PASSWORD' with a single asterisk '\*' and a yellow button to the right. Below the fields are 'OK' and 'CANCEL' buttons.

### CAUTION

**It is recommended to change ID and PW for your safety.**

CAMERA ALLOCATION function (changing camera display position)



- 1) Press Enter in the monitoring screen, then box is selected at No.1 camera.
- 2) Locate the box to the camera No. you want to move using direction buttons.
- 3) Enter the camera number to switch
- 4) Then, selected camera is switched with the Camera number you pressed.
- 5) To exit, press ESC

Ex) Switching camera No 4 and 12.

**Menu Bar** \* Click MENU button or right button of mouse



**DISPLAY**

1, 4, 9, 16

: Split screen change (the same as DISPLAY button)

Also can split 4 division window for display  
ch1 ~ ch4 , ch5 ~ ch8 , ch9~ ch12 , ch13 ~ ch16

**MISCELLANUEOUS**

**SEQUENCE**

Sequence camera group regularly

**FREEZE**

Pause the screen

**ZOOM**

1 Full Live screen available only.

Select Zoom : Press zoom button and locate the box to magnify using direction keys

Move Zoom : It can be moved using direction key after press Enter.



<ZOOM selected screen>



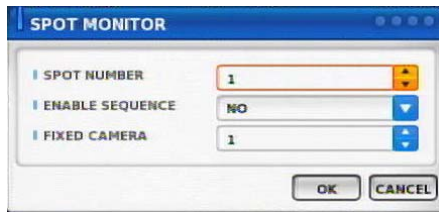
<ZOOM screen>

**NOTICE**

**Zoom screen may provide low quality or be shaken as formatted digitally.**

**SPOT**

2 spot monitors are supported and sequence / fix mode can be selected.  
Select the Spot monitor in SETUP>DEVICE>SPOT MONITOR.



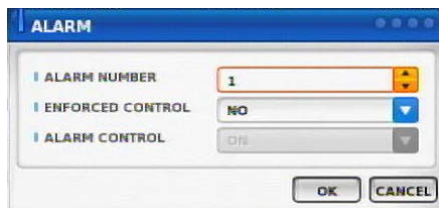
No OSD indication of camera number for SPOT output.

**PTZ**

Pan Tilt/Zoom/Focus/Iris Preset setting and moving functions are supported.  
Each function can be different from each PTZ protocol.

**ALARM**

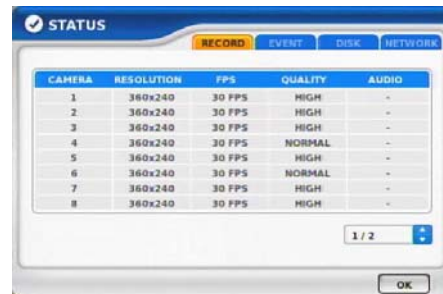
Control Alarm output function.



## STATUS

### RECORD

Displays current recording status



CAMERA	RESOLUTION	FPS	QUALITY	AUDIO
1	360x240	30 FPS	HIGH	-
2	360x240	30 FPS	HIGH	-
3	360x240	30 FPS	HIGH	-
4	360x240	30 FPS	NORMAL	-
5	360x240	30 FPS	HIGH	-
6	360x240	30 FPS	NORMAL	-
7	360x240	30 FPS	HIGH	-
8	360x240	30 FPS	HIGH	-

### EVENT

Displays current event information (motion/alarm).



Icon	1	2	3	4	5	6	7	8	9	10	11	12	13	14	15	16
Motion																
Alarm																
Other																

### DISK

Displays current Disk information



DISK	CAPACITY	SPACE	TEMPERATURE	S.M.A.R.T
SAMSUNG SP1	114GB	113GB	42 C	GOOD
-	-	-	-	-
TSSTcorpCD-R	-	-	-	-

### NETWORK

Displays current network information.  
Also displays current connected client information.



SERVER INFORMATION	
MAC ADDRESS	00:12:46:00:08:62
IP	192.168.0.1
NETMASK	255.255.0.0
GATEWAY	192.168.0.1
DNS	169.126.63.1
DDNS	

CLIENT INFORMATION	
USER NAME	IP

**PANIC RECORD**

Set recording mode in an emergency situation.  
Press SETUP>RECORD> EVENT RECORD>FPS/QUALITY

**SETUP**

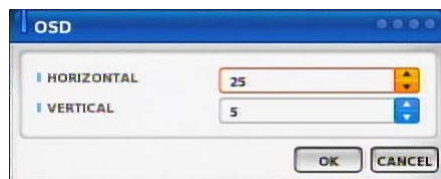
Select to enter into SETUP menu

**CAMERA COLOR**

Changes camera screen color

**OSD**

Changes OSD (On Screen Display's position).

**SEARCH**

Select to enter into SEARCH menu

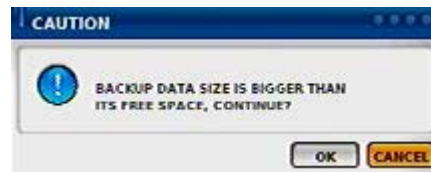
**BACKUP**

Select to backup recorded data.

1) Backup Device Search



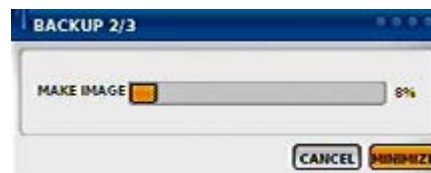
4) Warning when data size is over



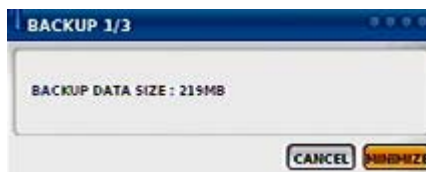
2) Select data to backup



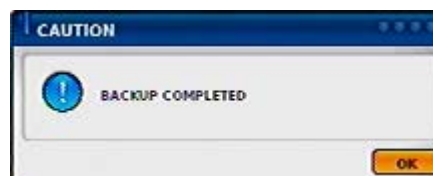
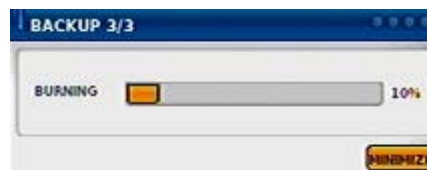
5) Make Image after pressing OK.



3) Calculate data size



6) Burning to CD



It would block remote search during local backup procedure.  
If users use defective media to backup, it might cause system reset

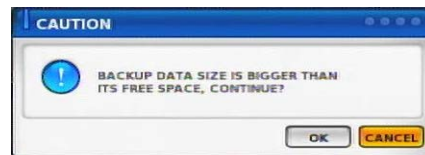
**BACKUP**

Use USB device to backup .

1) Backup Device Search



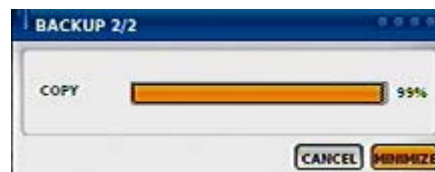
4) Warning when data size is over



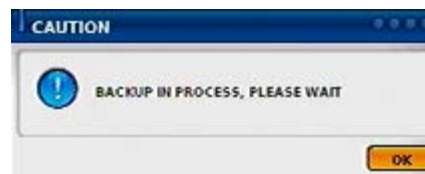
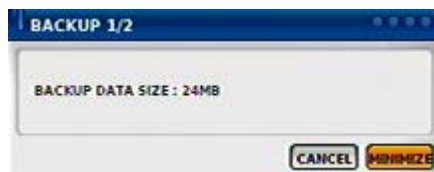
2) Select USB device to backup



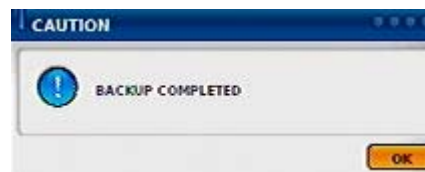
5) Copy data to USB driver



3) Calculate data size



6) Backup to USB completed

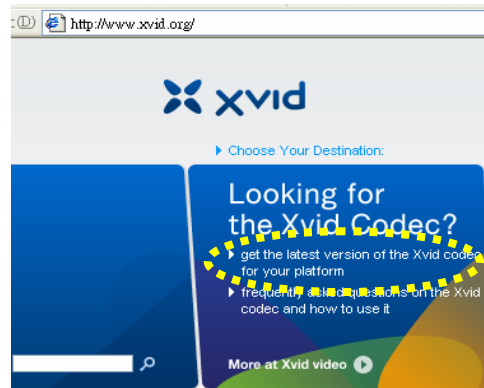


**Note** : After Backup to USB device , use windows Media Player to play the AVI file , if your Media Player can't shows any video , it should be the codec problem , you have to visit the Xvid web site , <http://www.xvid.org> to download the Xvid codec and install to your computer .

1) Media Player can't shows any video



2) Visit the Xvid web site to download Xvid codec  
<http://www.xvid.org>



**MUTE**  
Sound off

**LOGOUT**  
Press SETUP>SYSTEM>USER





**SETUP SCREEN****SYSTEM SETUP**

INFORMATION: To show DVR information

DATE/TIME : Setup date and time

DISK : Show the HDD status and format HDD

USER : User login ID and password setup

LOG : System operation information

LOGOUT : Logout system

SYSTEM SHUTDOWN: To shut down DVR

Remark: It takes more than 10 seconds to initialize (delete) the LOG information

---

## INFORMATION

### INFORMATION

DEVICE NAME: User can change the DVR name on his own.

LANGUAGE : Select language.

VERSION : Shows S/W version info.

(With UPGRADE button, you can upgrade the newest S/W version)



### NOTICE

**Contact manufacturer or distributors for more Upgraded version .**

CONFIGURATION IMPORT : You can read setup values saved in USB or Initialize the setup values

CONFIGURATION EXPORT : You can record setup values in USB equipment.

## DATE/TIME

### DATE/TIME

Set date, time & Time zone of System.

#### ⚠ CAUTION

When you use it for the first time  
Set these items in advance .  
It takes more than 50 seconds to  
validate time setting.



### TIME SYN

Synchronize time with internet time server.  
Default time zone is USA CST

#### ⚠ CAUTION

Set the GMT on the DATE/TIME list and  
Adjust TIME SYNC.

NTP server function is only for DVR client



### HOLIDAY

In the schedule record setup , it automatically  
converts normal date to holiday schedule.

It works when record is setup as schedule mode.  
It takes 90 seconds to validate holiday list



## DISK

### DISK TABLE

Shows current disk information connected to system.

IMPORTED : DISK installed  
 RECORD : RECORD possible  
 SYSTEM : DISK allotted for SYSTEM

### TOTAL DISK FORMAT

Format all connected HDD disks.  
 (When you select info column of connected DISK separately,  
 You can format DISK one by one.  
 It takes more than 200 seconds to format a 750 GB hard disk

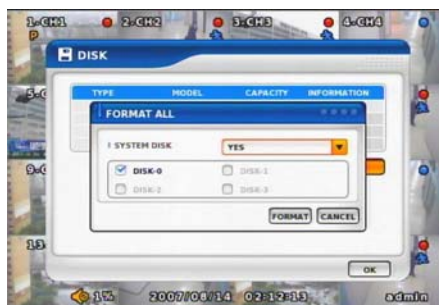


### ⚠ CAUTION

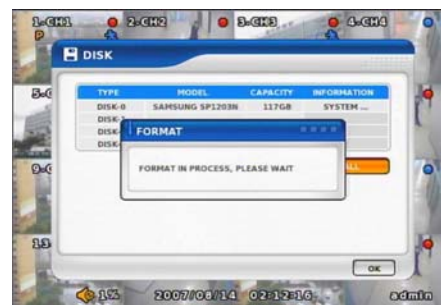
One of DISKS should be a system disk for recording system logs & other TEMP file issuing purposes.

### ⚠ CAUTION

Backup devices such as CD-RW/DVD-RW need to be installed as Secondary Slave.  
 (JR 2 Connector. – Slave jumper setting)



<SYSTEM DISK selected Screen>



<On FORMAT Screen>

## USER

### USER

Shows currently registered user lists.  
User accounts can be added or deleted.

+ add account with this button.  
X Delete account with this button.



### USER ADD

Possible to add user account  
according to authority.



### CONFIRM LOGIN

When YES selected, LOGIN needs to be confirmed every time to enter into setup / system menu.

### AUTO LOGOUT ENABLE

LOGOUT automatically after a certain period of time.

### AUTO LOGOUT TIME

Set idle time to LOGOUT

## LOG

### LOG

Shows all log infos on SYSTEM and other events

CLEAR : Remove all log info.

UP/DOWN button : Move to next/previous log info page by page .

⏪ Move to first part of LOG info.

⏩ Move to Last part of LOG info.



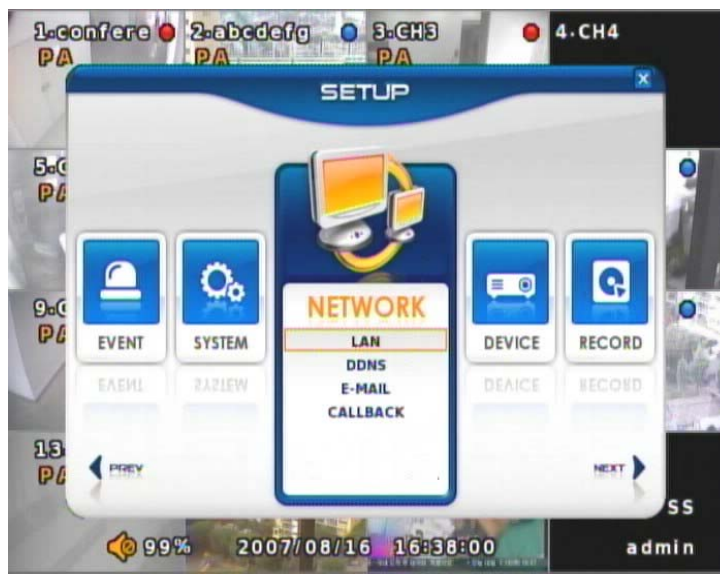
### LOGOUT

LOGOUT function when exiting set up

### SYSTEM SHUTDOWN

SYSTEM ends.

The same as POWER OFF button of front or remote control.

**NETWORK****NETWORK SETUP**

LAN : IP setup

DDNS : DDNS setup

E-MAIL: Setup E-mail address for event message

CALLBACK: Setup computer IP for event message

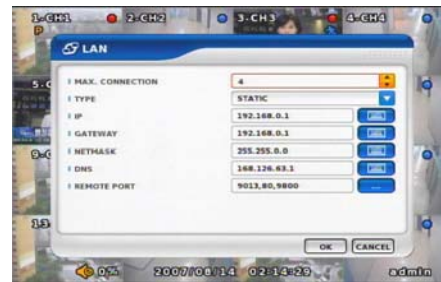
## LAN

### MAX CONNECTION

Up to 7 users

### STATIC TYPE

For STATIC IP selection, settings for IP, GATEWAY, NETMASK have to be setup manually.



### DHCP TYPE

For automatic DHCP IP selection, users only need to set up the DNS data.

(DHCP operation mode must be structured under IP sharing device)



### ADSL TYPE

Please check your local ISP for the your ID and password.





## DDNS(DYNAMIC DNS)

### ENABLE

Select if you want DDNS

This is under the situation of Dynamic IP Network.

### SERVER

Select DDNS server

EZDDNS : Specialized DDNS server operated by server

DYNDNS: DDNS common server



## NOTICE

**In order to use DDNS service  
Account & HOSTNAME should be registered in the server first.**

### HOSTNAME

User name of IP ADDRESS ON Dynamic IP circumstance.  
It is the same name as registered on DDNS server.

### USERNAME / PASSWORD

Type the user name & pas word registered on DDNS service.

### ROUTER

Check if NETWORK is through ROUTER or IP sharer .

## CAUTION

**Recommended to use EZDDNS Server rather than DYNDNS as DYNDNS is not optimized  
The system.**

## E-MAIL

### ENABLE

Select when you need E-MAIL transmission.  
ALL event information is sent to admin's E-mails.



### SMTP SERVER

Write the MAIL sending SMTP server name.

### AUTH ENABLE

Check when you need account authority.

### ID / PASSWORD

Input account & password .

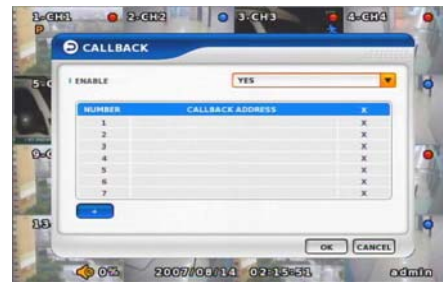


## CALLBACK

### ENABLE

Check to use CALLBACK function .

All event or specific information are sent to "Agent" Program which is installed on P.C



### CALLBACK ADD

Register IP address of P.C for callback function



**DEVICE****DEVICE SETUP**

- CAMERA : Camera setup
- ALARM : Alarm setup
- DISPLAY: On screen indication setup
- MAIN MONITOR: Main monitor setup
- SPOT MONITOR: Call monitor setup
- MISCELLANEOUS: Key tone and keyboard

## CAMERA

### TITLE

Can change the camera name.

### HIDDEN

Doesn't show the screen on live mode  
Even though it records and runs normally.

### PTZ ENABLE

Check if you want to use PTZ function.

### PTZ PROTOCOL

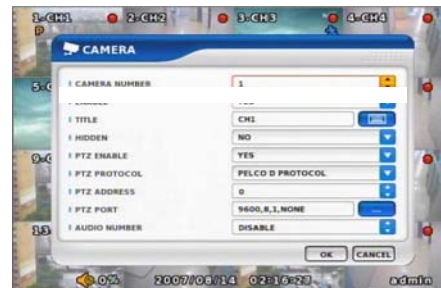
Select PTZ PROTOCOL.  
Various of protocol information including  
PELCO-D are implemented.  
If you can not find one, please contact manufacturer

### PTZ ADDRESS

When you use many of same PTZ equipments  
You can name on these PTZ sites.  
Site numbers can be from 0 to 255.

### PTZ PORT

Adjustable related protocol BAUDRATE, DATA BIT.



## ALARM

### ENABLE

Check if you use specific ALARM.

### TITLE

Changes connected ALARM names.

### ALARM TYPE

Select specific ALARM TYPE.  
(NORMAL OPEN, NORMAL CLOSE)



## MAIN MONITOR

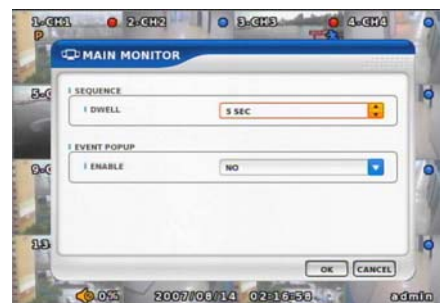
Set up SEQUENCE, EVENT POPUP of main monitor.

### SEQUENCE

Set up the screen switching times.

### EVENT POPUP

Check if you want event pop up function.



**DISPLAY**

Shows all OSD display details.

**CAMERA INFORMATION**

Selects the display of CAMERA NO, TITLE

**EVENT INFORMATION**

Select OSD display for the EVENT.

**STATUS INFORMATION**

Shows various status of OSD.

**SPOT MONITOR**

Set up functions of SPOT MONITOR.

**SPOT NUMBER**

Select SPOT output numbers.

**SPOT SEQUENCE ENABLE**

Select SPOT switching channel.

**FIXED CAMERA**

Select the camera number not to switch .

**SEQUENCE CAMERA**

Select which camera to switch.

**SEQUENCE DWELL**

Adjust switching times .

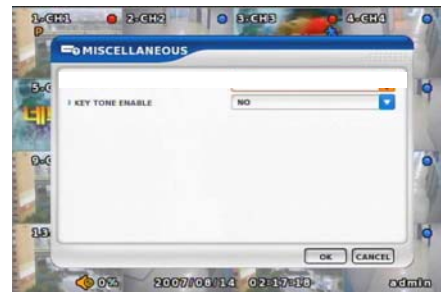
---

**MISCELLANEOUS**

Control of remote controller/key related functions.

**KEY TONE ENABLE**

Select button volume on the front panel.





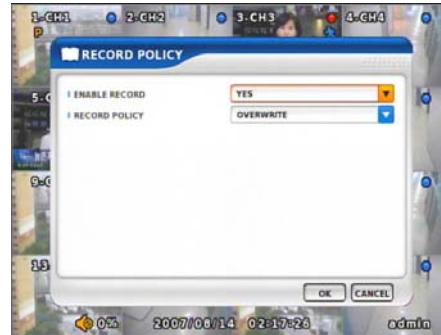
**RECORD****RECORD SETUP**

RECORD POLICY: HDD status setup when recording is full

RECORD : Recording setup (resolution, recording status, alarm, motion etc)

**RECORD POLICY**

HDD status setup when recording is full  
 - Two types (Single Record, Overwrite)

**RECORD**

Recording setup for each camera

Remark:

Under half D1, the aspect ratio of local AVI backup will be adjust to 8:3

**RECORD MODE**

Set up record type.  
 Default as OFF record mode.

**NORMAL/EVENT RECORD FPS**

Recording frame rate setup

**NORMAL/EVENT RECORD QUALITY**

Recording quality setup

**SCHEDULE**

Schedule recording setup



**EVENT****EVENT SETUP**

- MOTION : Motion setup
- SENSOR: NO/NC setup
- VIDEO LOSS: Video loss detection setup
- SYSTEM: Event action setup

## MOTION

### SETUP

Set up the MOTION area & sensor.

Click mouse right or MENU KEY button to see motion area window



### RECORD

Set pre & post record mode.

#### ⚠ CAUTION

When record frames are less, PRE/POST RECORD need to be set a lot more for correct record search.



### ACTION

Setting up list for how to act after EVENT.

#### -POPUP CAMERA/DWELL

:Set popup channel & time.

#### -ALARM/BUZZER DWELL

:Set alarm & buzzer time.

#### -E-MAIL

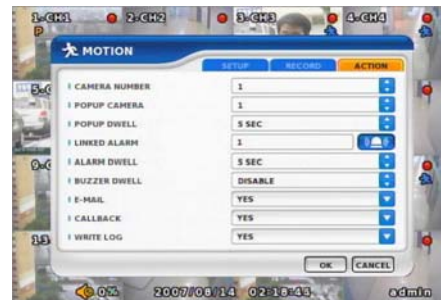
:Select EVENT info to be sent by e-mail.

#### -CALLBACK

:Select EVENT info to be sent to AGENT.

#### -WRITE LOG

:Select to write LOG info.



## SENSOR

### SETUP

Set the SENSOR name & TYPE.

**NORMAL OPEN** : Normally it opens and sends signals when detects sensors.

**NORMAL CLOSE** : Normally it closes, and it sends SIGNAL when detects sensors.



### RECORD

Set Connecting camera, Pre, post record.

#### **CAUTION**

When record frames are less, PRE/POST RECORD need to be set a lot more for correct record search.



### ACTION

Setting up list for how to act after EVENT.

#### **POPUP CAMERA/DWELL**

:Set popup channel & time.

#### **-ALARM/BUZZER DWELL**

:Set alarm & buzzer time.

#### **-E-MAIL**

:Select EVENT info to be sent by e-mail.

#### **-CALLBACK**

:Select EVENT info to be sent to AGENT.

#### **-WRITE LOG**

:Select to write LOG info.



## VIDEO LOSS

VIDEO LOSS can be an event type and can set camera record and action.

### SETUP

Select whether you want VIDEO LOSS Function or not.



### RECORD

Set connecting camera Pre& post record.

### ⚠ CAUTION

When record frames are less, PRE/POST RECORD need to be set a lot more for correct record search.



### ACTION

Setting up list for how to act after EVENT.

#### POPUP CAMERA/DWELL

:Set popup channel & time.

#### -ALARM/BUZZER DWELL

:Set alarm & buzzer time.

#### -E-MAIL

:Select EVENT info to be sent by e-mail.

#### -CALLBACK

:Select EVENT info to be sent to AGENT.

#### -WRITE LOG

:Select to write LOG info.

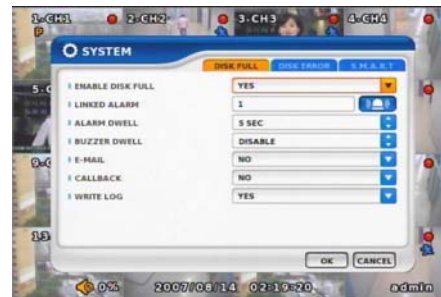


## SYSTEM

Sets how to operate event related with DISK mainly.

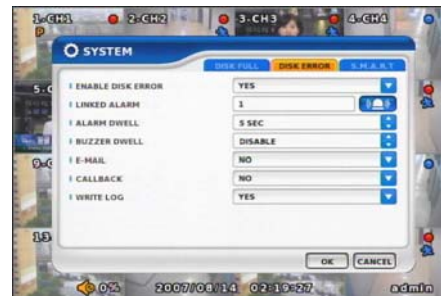
### DISK FULL

Sets when HDD is full of record.



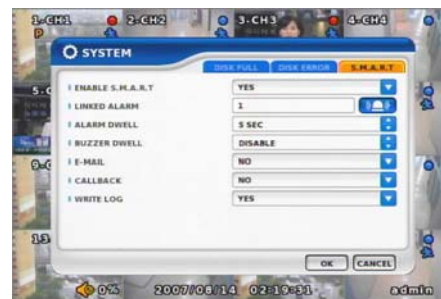
### DISK ERROR

Sets when there is an error on HDD.  
This function has been removed.



### S.M.A.R.T

Enables the system to prevent possible malfunction of HDD by interfacing between system and HDD.



## SEARCH



- ① Playback Screen : Video playback screen
- ② Playback Time : Playback Time Display
- ③ Display screen indication:

**Playback Icon**

Pause (II)

Playback (▶)

Multiple Playback(▶▶, ▶▶▶, ▶▶▶▶)



**SEARCH MENU**



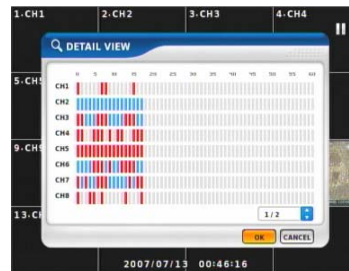
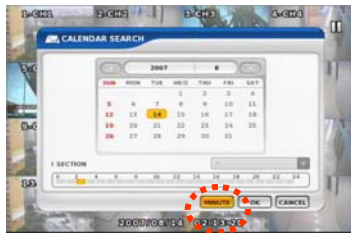
**DISPLAY**

Select screen division mode. (1,4,9,16 split screen)

**CALENDAR SEARCH**

Select date , hour, minutes, seconds in calendar search.

When you click MINUTE, you can find the specific record status under minute base

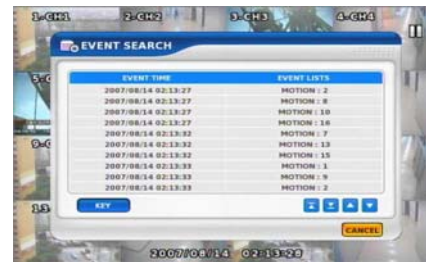


### EVENT SEARCH

It shows all EVENT record list.  
If you click related EVENT,  
It plays that event promptly.

### CAUTION

It may not be the same channel image as shown on EVENT LIST because it shows the first display image recorded at that time zone.



### SEARCH KEY

Can be selectable on EVENT search.

#### -START/END

:Set EVENT search start, end time.

#### -MOTION/SENSOR/VIDEO LOSS

:Selectable per each camera



### DATE/TIME SEARCH

Search data by Date/Time .

You can search the event promptly

When you know the exact event time.



**FIRST**

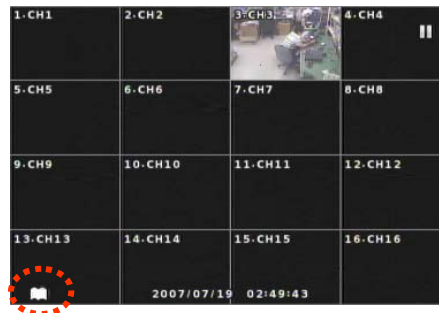
Move to the beginning of the recorded data.

**LAST**

Move to the end of the recorded data.

**BOOKMARK**

When you set up a Bookmark time, this time will be set as the starting time during back up.



**PLAYBACK USER INTERFACE**

Playback buttons appears when locate the mouse pointer at the bottom of screen



**SEARCH KEY**

PLAY/PAUSE : Press PLAY to start from the position that was stopped from previous playback

◀ | Step backward / calendar search in live mode | ▶ Step forward / Event search in live mode

◀◀ Fast backward / Beginning of record time in live mode ▶▶ Fast forward / Last record time in live mode

■ Stop playback (Return to Live Display)

## DEVICE

Search for internal record disks or external Backup devices.

## LOCAL DEVICE

Search the data of internal DISK.

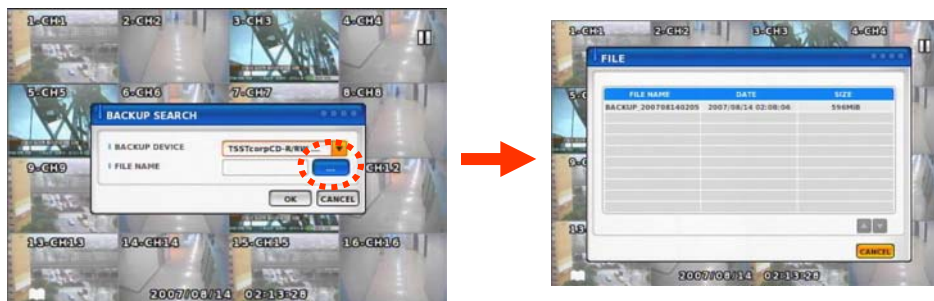


## BACKUP DEVICE

Search backup device (Select when you play the backup data.)

If there are various back up devices , you can select a specific one .

It only supports DVD +R/-R and CD RW discs for backup



If you can not play the AVI file from backup, please visit Xvid web site at <http://www.xvid.org> to download the Xvid codec for installation.

## REMOTE



## &lt;REMOTE PROGRAM IS?&gt;

With connected to DVR remotely, it is to perform Remote Monitoring, Remote Search, Remote Backup etc. (Please install remote program from the program CD)

## Environment conditions for Remote Program

1. INTEL P-4
2. 256M or higher main memory(512M recommend)
3. WINDOWS O/S(WIN 2000, XP, Vista(32bit))
4. 32MB VGA card supports RGB (ATI series recommend)
5. At least 10Mbps network speed (Max 100Mbps support)

Please note that some buttons and graphics may not be activated at this moment. Those inactivated buttons will be used later when system upgrades and expands  
 If the viewer opens on IE, user needs to put connection IP on  
 Select Internet Options → Security → Trusted sites  
 ADD this website to the zone

### Remote Control : Use Windows IE Browser

User can use Windows IE Browser connected to the remote DVR system .

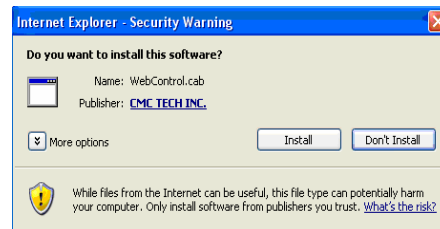
**Note :** Right now no support Firefox browser connected to the DVR system .

First time use the IE Browser connected to the DVR system , it will display

"Click here to install the following ActiveX control :  
'WebControl.cab' from 'CMC TECH INC.'"



Press the install button to install the  
WebControl.cab to your computer



After install WebControl.cab completed ,  
your IE Browser will display DVR control center,  
Login with ID and Password , then you can  
control the DVR system through the IE Browser .



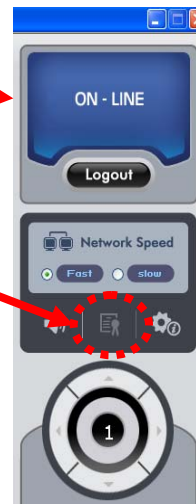
After login successful it display ON-LINE

Also you can use the client side application to  
Remote control your DVR system .

Download this Remote control software just press  
this button then it will auto download the software .

URL of remote software download

[http://www.ultracctv.com/downloads/software/setup\\_tigon\\_1648.exe](http://www.ultracctv.com/downloads/software/setup_tigon_1648.exe)

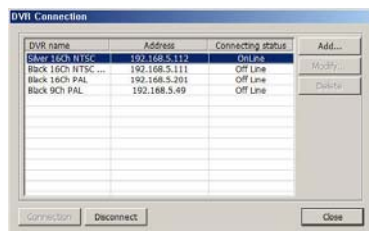


**1 Connection information and Button**



Shows DVR's name, IP address and connection status.

DVR connection button.



**Add** : Enter IP address and user authentication to connect DVR

**Modify** : Modify IP address and user authentication of the existing list

**Delete** : Delete existing use.

<DVR Connection Window>

**Add/Modify**

Connecting information

DVR name: black 16Ch PAL

Address: 192.168.5.201

Service Port: 9013

User certification

User Name: admin

Password: \*

Certification Information Save

Ok Cancel

DVR name :

Specify a name that you can easily identify.

Address :

Specify assigned IP address to connect DVR (Type the Host name of REAL IP or DDNS.)

<New Connection/Modify Dialogue Window>



**<What is IP address?>**

A set of address system that is used to find out destination in network access via Internet or LAN.

IP address is divided into REAL IP and VIRTUAL IP, and REAL IP must be sent on DVR for the access from remote site via internet. You can be assigned with REAL IP Or DDNS service ID (Hostname of Dynamic Domain Name Server).

Service Port :Set this the same as the service port assigned to DVR.

**<What is service port?>**

Function to make the virtual IP available to the devices such PC or DVR with Automatic connection to the specified service port when remote access is made To router via the router or IP Share of one REAL IP. (But this function is available Only when router or IP Share supports it.)

User Name : Type the user name authorized in DVR

Password : Type the password authorized in DVR

Save Authentication Information :Save Authentication Information

## 2 Program Information and Set up



Program Information :

Shows Remote Program's information.



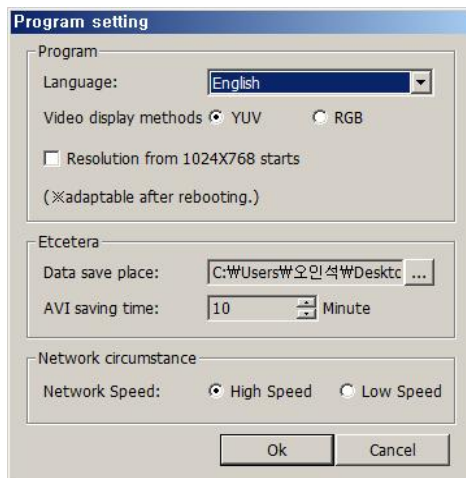
Program Setup :

Sets up Remote Program.

( Language, Display Output, Resolution, Save Path, Network Speed Etc)



<Program Information Window>



<Program Setup Window>

**Language :**

To choose program's language.

**Video Display :**

**YUV mode :** According to your PC graphic card ability, the support can be decided. This mode shows faster, clear ability of image transmission than RGB mode.

**RGB mode :** It is widely compatible with most graphic cards, and select this when YUV mode is not supported..

**Resolution from 1024X768 starts :**

It always shows 1024 x768 when you check..

※ Above setting value will apply after restart of the program.

**<Recommended Graphic Card>**

ATI series : Radeon7000series (More then 32M), RADEON series...  
 NVIDIA series : M64series(More then 32M), GEFORCE series...  
 Etc : VGA card to support YUV mode YUV...

Data Save Place :Sets up basic path of AVI file to save.

AVI Saving time : Sets up saving time of AVI file from remote.

Network Speed :

High Speed : System sends off images at high speed possible.

Low Speed : System sends off images at normal speed in consideration of stability.

**3 Status Icon**



Status icon of connected DVR

**Recording status**

CH	Resolution	Frame	Picture Qu...	Sound
01	-	-	-	-
02	360X240	5fps	Normal	Not use
03	720X240	1fps	Normal	Not use
04	360X240	1fps	High	Not use
05	-	-	-	-
06	360X240	5fps	High	Not use
07	720X240	1fps	Normal	Not use
08	-	-	-	-
09	-	-	-	-
10	-	-	-	-
11	360X240	5fps	High	Not use
12	720X480	30fps	Highest	Not use
13	-	-	-	-
14	720X480	1fps	Normal	Not use
15	720X480	1fps	Normal	Not use
16	720X480	1fps	Normal	Not use

Close

<Recording Status>

Shows and check the recording status

**Event status**

	1	2	3	4	5	6	7	8	9	10	11	12	13	14	15	16
Motion	🚗	🚗	🚗	🚗	🚗	🚗	🚗	🚗	🚗	🚗	🚗	🚗	🚗	🚗	🚗	🚗
Sensor	🔊	🔊	🔊	🔊	🔊	🔊	🔊	🔊	🔊	🔊	🔊	🔊	🔊	🔊	🔊	🔊
No video signal	📺	📺	📺	📺	📺	📺	📺	📺	📺	📺	📺	📺	📺	📺	📺	📺

Alarm control... Close

<Event Status>

Shows DVR's event status and you can check the status of Motion, Sensor, Video Loss at real time.

**Alarm control**

Alarm1	<input checked="" type="checkbox"/> ON	<input type="checkbox"/> OFF
Alarm2	<input type="checkbox"/> ON	<input type="checkbox"/> OFF
Alarm3	<input type="checkbox"/> ON	<input type="checkbox"/> OFF
Alarm4	<input type="checkbox"/> ON	<input type="checkbox"/> OFF

Close

<Alarm Control>

You can On/Off the DVR's alarm if you press the Alarm control button.

**HDD Status**

Type	Capacity	Used	Temperatur	SMART
HDD1	111GB	99%	37°C	Good
HDD2	279GB	92%	40°C	Good
HDD3	279GB	01%	39°C	Good
HDD4	-	-	-	No support

Close

<HDD Status>

Shows the connected DVR HDD status.

You can check temperature and status at real time.

**4 REMOTE SEARCH Execution and Set Up**



**REMOTE SEARCH Execution**

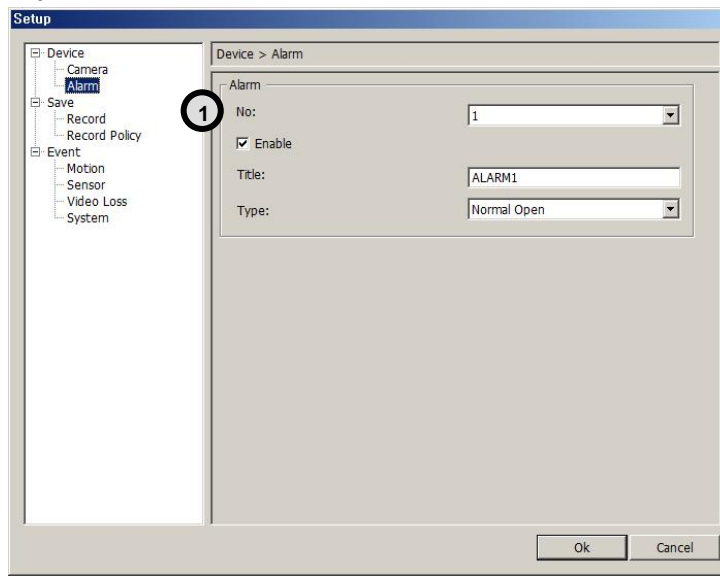
**Set Up Execution**

Pressing each button operates REMOTE SEARCH or Set Up.

REMOTE (LIVE) and REMOTE SEARCH are made up in separate program.

## Remote Set Up &lt;Camera&gt;

- ① Camera Enable has been removed.
- ② Title : Item to revise/type the camera name.
  - Security : When checked, It displays 'Hidden' on monitor. (though it keeps recording)
- ③ Link PTZ : Sets up PTZ camera.
  - PTZ address: Item to assign PAN TILT address per camera.
    - Name :Item to check PTZ Camera's model name.
    - ID : Item to select PTZ address per camera.
  - Port bit rate : Item to select the PTZ's port bit rate.
  - Data bit :Item to select data bit.
  - Stop bit : Item to select Stop bit.
  - Parity : Item to select Parity.
- ④ Audio : Item to select which audio channel to be used among total 4 audio inputs.

**Remote Setup <Alarm>**

- ① No : Item to select Alarm No.  
To set up all the camera equally, Choose "select all"

Enable : Item to select to use Alarm, Removing the check stops using that channel.

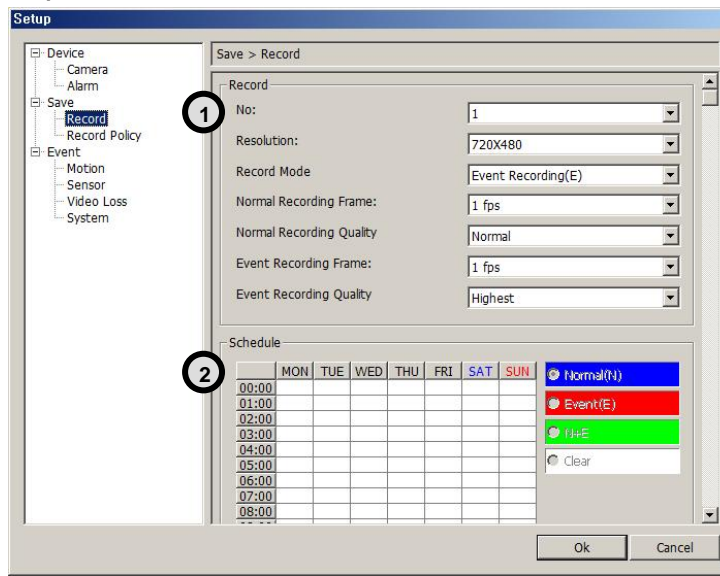
Title : Item to type Alarm's name.

Type : Item to select Alarm's type.

- Normal Open : Type of alarm open in general situation.

- Normal Close : Type of alarm close in general situation.

## Remote Set Up &lt;Record&gt;



- ① No : Item to select Camera No.  
To set up all the camera equally, Choose “select all”

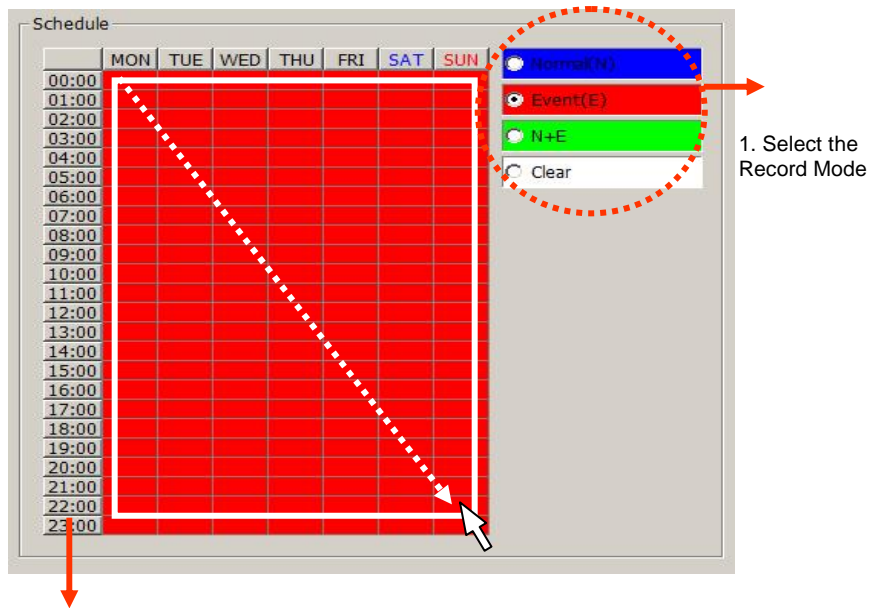
Resolution : Item to change the resolution.  
- NTSC : 720X480, 720X240, 360X240  
- PAL : 720X576, 720X288, 360X288

Normal Record Frame :Item to select normal record frame.  
Normal Record Quality : Item to select normal record quality.

Event Record Frame :Item to select Event (Motion + Sensor + Video Loss) record speed.  
Event Record Quality : Item to select Event (Motion + Sensor + Video Loss) record quality.

Schedule : Item to select record schedule.  
- Normal : Always Record  
- Event : Motion, Sensor, Video Loss  
- N + E : Always + Event Record  
- Clear : Delete the current record schedule.

## ② Remote Set Up <Record (Timetable)>



2. Select Day/Time

### Schedule Indication by color

- Normal(N) : (Blue)
- Event(E) : (Red)
- Normal(N) + Event(E) : (Green)
- Clear (No Record) : (White)

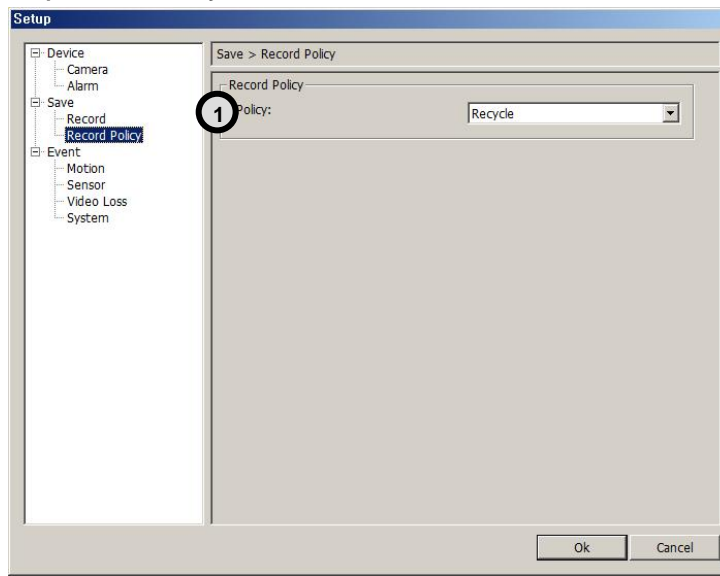
### < Schedule of Record >

It is the list of selection in which schedule to use in operating the relevant camera channel.

First select the item you need among Normal time, Event and Normal time + Event.

Then drag mouse from the wanted position on time line.

※ To edit schedule record, you need to set record as schedule mode.

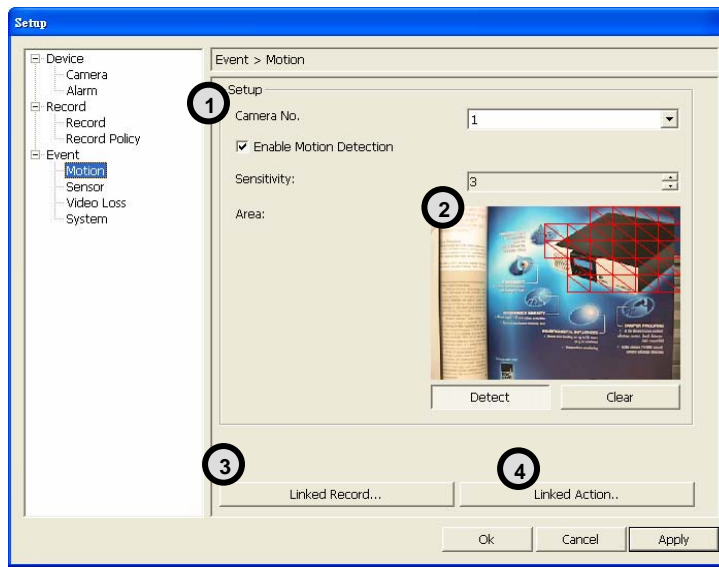
**Remote Set Up <Record Policy>**

- ① Record Policy: Item to select record policy

Overwrite : When HDD capacity is almost consumed, It erases old data and record new.  
Single Record : To stop recording on 100% of HDD capacity.

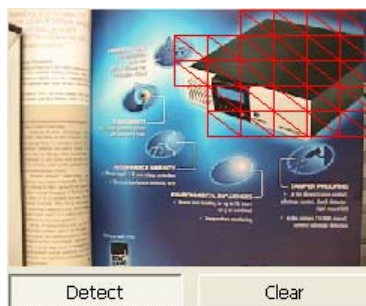


## Remote Set Up <Motion>

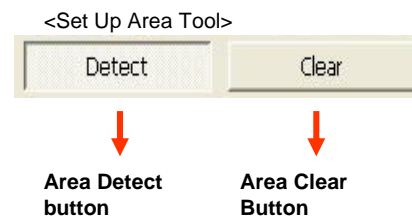


- ① **Camera No** : Item to select Camera No.  
To set up all the camera equally, Choose “select all”
- Enable** : Selects to use motion sensor, Removing the check stops using that channel.
- Sensitivity** : Adjusts the sensitivity in motion detection.  
There are 5 steps and as the number increase, it gets more sensitive.

- ② **Area** : Item to select motion area.



Area is selected when drag the mouse on the image.



### 3 Remote Set Up <Motion (Link Record)>

**Link Camera :**  
Selects which channel to record when motion is detected on the relevant channel.

✘ **Multiple selection possible**

**Pre Record :** Sets pre-event recording time. (Max 5 second)  
**Post Record :** Sets post-event recording time. (Max 60 second)

### 4 Remote Set Up <Motion (Link Action)>

**Popup Camera :**  
Selects which channel to Popup when motion is detected on the relevant channel.

✘ **It works when the Popup setting is 'Yes' on DVR.**

**Popup Time :**  
Sets Popup time

**Link Alarm :**  
Select Alarm to be linked when motion is detected.

✘ **Multiple selection possible**

**Alarm Time :** Sets Alarm output time. (Max 30 second)  
**Buzzer Time :** Sets buzzer output time in DVR. (Max 30 second)

- Mail :** When motion is detected, the log is sent to the selected e-mail.
- Call Back :** When motion is detected, the log is sent to the selected IP address.
- Log :** Item to save Log writing when motion detected.  
(It is not recorded on the system Log but used for event search.)

**Motion detection function is a mode to detect in accordance with the amount of color changes of image. So, please be careful that DVR keeps recording as continuous motion when the image of camera is blinking caused by light problem or camera Auto Iris problem.**

## Remote Set Up &lt;Sensor&gt;

- ① **Sensor No** : Sets sensor No.  
To set up all the camera equally, Choose "select all"

**Enable** : Selects to use sensor, Removing the check stop using relevant sensor.

Title : Item to select sensor's name.

Type : Item to select sensor type.

- Normal Open : Type of Alarm open in general situation.

- Normal Close : Type of Alarm close in general situation.

## 2 Remote Set Up <Sensor (Link Record)>

The 'Link Record' window contains the following elements:

- Record** section:
  - Link Camera:** A 4x4 grid of buttons numbered 1 to 16.
  - Pre Record:** A slider set to 5 seconds.
  - Post Record:** A slider set to 10 seconds.
- Buttons:** 'Ok' and 'Cancel' at the bottom.

**Link Camera :**  
 Selects which channel to record when sensor is detected on the relevant channel.  
 ※ Multiple selection possible

**Pre Record :** Sets up pre recording time. (Max 5 second)  
**Post Record :** Sets up post recording time. (Max 60 second)

## 3 Remote Set Up <Sensor (Link Action)>

The 'Link Action' window contains the following elements:

- Action** section:
  - Popup Camera:** A dropdown menu showing '1'.
  - Pupup Time:** A slider set to 5 seconds.
  - Link Alarm:** A 1x4 grid of buttons numbered 1 to 4.
  - Alarm Time:** A slider set to 5 seconds.
  - Buzzer Time:** A slider set to 0 seconds.
  - Mail:**
  - Callback:**
  - Log:**
- Buttons:** 'Ok' and 'Cancel' at the bottom.

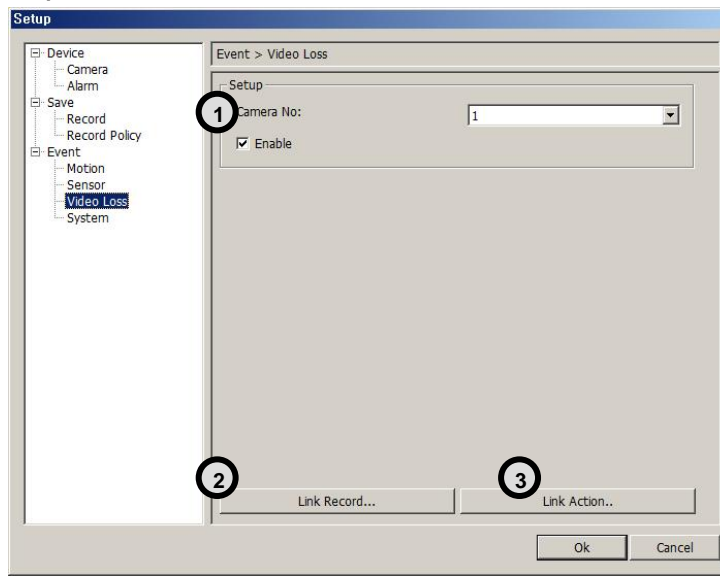
**Popup Camera :**  
 Selects which channel to Popup when sensor is detected on the relevant channel.  
 ※ It works when the Popup setting is 'Yes' on DVR.

**Popup Time :**  
 Selects Popup time.

**Link Alarm :**  
 Selects Alarm to be linked when sensor is detected.  
 ※ Multiple selection possible

**Alarm Time :** Selects Alarm output time. (Max 30 second)  
**Buzzer Time :** Selects buzzer output time. (Max 30 second)

- Mail :** When sensor is detected, the log is sent to the selected e-mail.
- Call Back :** When sensor is detected, the log is sent to the selected IP address
- Log :** Item to save Log writing when sensor detected  
 (It is not recorded on the system Log but used for event search.)

**Remote Set Up <Video Loss>**

- ① **Camera No** : Item to select camera No.  
To set up all the camera equally, Choose “select all”
- Enable** : Selects to use Video Loss.

## 2 Remote Set Up <Video Loss( Link Record)>

The 'Link Record' dialog box contains the following elements:

- Record** section:
  - Link Camera:** A 4x4 grid of buttons numbered 1 to 16.
  - Pre Record:** A numeric input field with a 'Second' label and a range from 0 to 59.
  - Post Record:** A numeric input field with a 'Second' label and a range from 0 to 59.
- Buttons:** 'Ok' and 'Cancel' buttons at the bottom.

**Link Camera :**  
Selects which channel to record when video loss is detected on the relevant channel.  
**※ Multiple selection possible**

**Pre Record :** Sets up pre recording time. (Max 5 second)  
**Post Record :** Sets up post recording time. (Max 60 second)

## 3 Remote Set Up <Video Loss (Link Action)>

The 'Link Action' dialog box contains the following elements:

- Action** section:
  - Popup Camera:** A dropdown menu with '1' selected.
  - Popup Time:** A numeric input field with a 'Second' label and a range from 0 to 59.
  - Link Alarm:** A 1x4 grid of buttons numbered 1 to 4.
  - Alarm Time:** A numeric input field with a 'Second' label and a range from 0 to 59.
  - Buzzer Time:** A numeric input field with a 'Second' label and a range from 0 to 59.
- Checkboxes:** 'Mail', 'Callback', and 'Log' (all checked).
- Buttons:** 'Ok' and 'Cancel' buttons at the bottom.

**Popup Camera :**  
Selects which channel to Popup when video loss is detected on the relevant channel.  
**※ It works when the Popup setting is 'Yes' on DVR.**

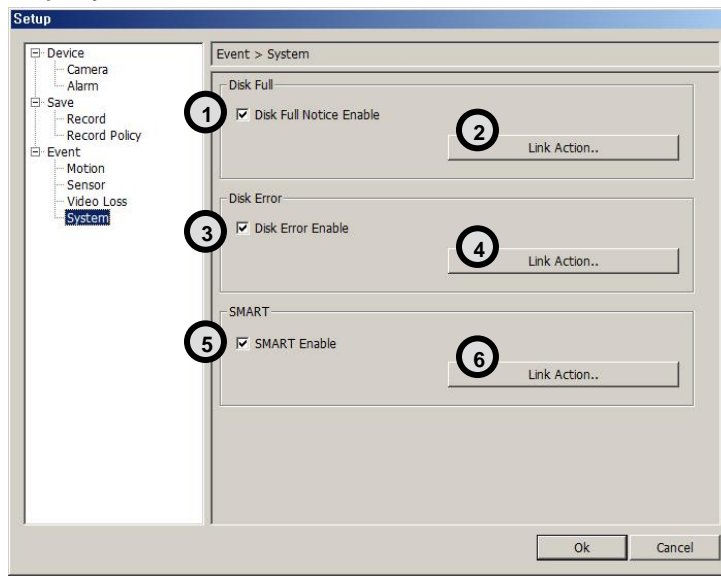
**Popup Time :**  
Selects Popup time.

**Link Alarm :**  
Selects Alarm to be linked when video loss.  
**※ Multiple selection possible**

**Alarm Time :** Selects Alarm output time (Max 30 second)  
**Buzzer Time :** Selects buzzer output time (Max 60 second)

- Mail :** When video loss occurred, the log is sent to the selected e-mail
- Call Back :** When video loss occurred, the log is sent to the selected IP address.
- Log :** Item to save Log writing when video loss occurred.  
(It is not recorded on the system Log but used for event search.)

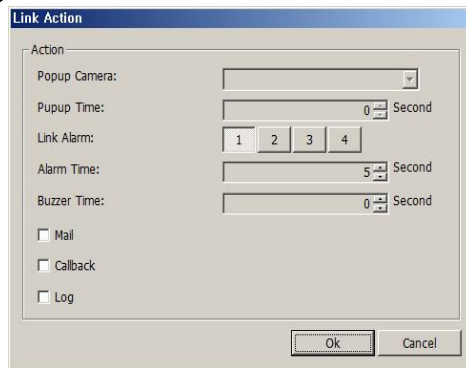
## Remote Set Up &lt;System&gt;



① **DISK FULL** : List for all installed HDD disks.

Disk Full Notice Enable : Activate Disk Full Notice when installed disks are full.

② **Remote Set Up <Disk Full (Link Action)>**



Popup Camera :  
Not available as of now

Popup Time :  
Not available as of now

Link Alarm :  
Selects which Alarm to be linked when all  
installed HDD disks are full.  
※ **Multiple selection possible**

Alarm Time : Selects Alarm output time. (Max 30 second)

Buzzer Time : Selects buzzer output time (Max 30 second)

- Mail : When all installed HDD disks are full, the log is sent to the selected e-mail
- Call Back : When HDDs are full, the log is sent to the selected IP address.
- Log : Selects to save Log writing when installed HDDs are full.  
(It is not recorded on the system Log, but used for event search.)

### 3 Disk Error : Shows data error on all of the HDDs installed.

- Enable Disk Error : When there is a disk error, it is linked to action.

### 4 Remote Set Up <Disk Error (Disk Action)>

Popup Camera :  
Not available at this moment

Popup Time :  
Not available at this moment

Link Alarm :  
Selects Alarm to be linked when HDD error.

※ Multiple selection possible

Alarm Time : Sets Alarm output time (Max 30 second)  
Buzzer Time : Sets buzzer output time (Max 30 second)

- Mail : When HDD error occurs, the log is sent to the selected e-mail
- Call Back : When HDD error occurs, the log is sent to the selected IP address.
- Log : Selects to save Log writing when HDD error.  
(It is not recorded on the system Log but used for event search.)

### 5 SMART

- Enable SMART : Select to use SMART feature.

#### SMART Function??

It checks the physical errors and observes the HDD disk continuously such as Temperature, I/O device errors and general conditions of the HDD disk.



## 6 Remote Set Up <SMART (Link Action)>

Popup Camera :  
Not available at this moment

Popup Time :  
Not available at this moment

Link Alarm :  
Selects which alarm to be linked

※ **Multiple selection possible**

Alarm Time : Sets Alarm output time (Max 30 second)

Buzzer Time : Sets Buzzer output time (Max 30 second)

- Mail : When smart related problem occurs, the log is sent to the selected e-mail.
- Call Back : When problem occurs, the log is sent to the selected IP address.
- Log : Selects to save Log writing when smart related problem occurs  
(It is not recorded on the system Log but used for event search.)

## 5 PLAY & PAUSE

Starts or stops image transmission on the Remote Live screen.  
This starts automatically when search or set in the setup menu.



Starts to play when pressed.



Stops to play when pressed.

## 6 AUDIO Transmission

Controls Audio volume. **※Audio signal is sent on full screen mode only.**



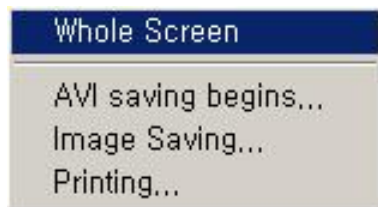
Sound volume control gauge



**Mute Button :**  
Stops audio transmission.

## 7 Right Mouse Click Action

When the right button is clicked on Remote Live, the following menu below appears and the following functions can be used.



Whole Screen : Hides the function button and shows the image full screen.

AVI Saving Begins :  
Starts AVI saving of the channel Selected.

**※Audio signal is saved on full screen mode only.**

Image Saving.. : Save image file of channel selected (Save JPEG or BMP)

Printing.. : Print current image of the channel.

---

**8 Channel Button**

Moves to the channel selected and it has the same function as double click the left mouse button on the selected channel.

**9 Layout Modify Button**

Screen Division Button : Selects desirable screen division.

Whole Screen : All buttons are hidden and the screen displays full.



※ Left double click of mouse returns to the previous screen from whole screen.

10 PTZ Operation



A camera supporting PTZ can be used on Remote Viewer program.  
※ Refer to PTZ support list

**Direction Button :**  
Button to move top, bottom, left, right

**Channel Indication :**  
Indicate current channel

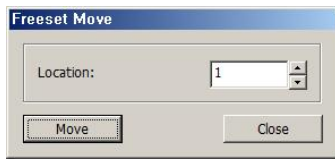
**Speed Control Button :**  
Button to control moving speed

**Image Control Button :**  
Button to adjust Zoom, Focus, Iris

**Pre set move button**

**Pre set save button**

Preset Move: Move to saved preset No.  
Preset Save : Save preset No.



<Preset Move>



<Preset Save>

Remote Search



1 Playback Display

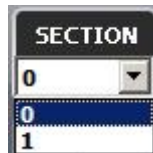
Camera Name →



← Green Border Line :  
Display the selected camera.

Recorded Date/Time →

2 SECTION



Selects section

Section is created when Date/Time is changed to former time.  
Former Date/Time will be kept in section 0.  
Newly set Date/Time will be kept in section 1.....

\*\*Only one remote-playback connection is allowed

3 Move & Event Search



- **Move Button** : Move to selected time
- **Event Search Button** : Popup the event search window

- Shows start and end time of recorded data.
- Moves to the time to search and press OK button.

<Move Window>

- Select the time to event search
- Select events in detail.
- Select the camera to search.
- Start event search. Click below Import button to list events.
- Shows current searched event lists.
- Hotkey :Play the searched event.  
Click Stop button first and select a certain event list and click Hotkey to play the event.
- Import : Search the next event list.  
**※ 10 lists are shown every time clicks import button**

<Event Search Window>

Please make sure to select "WRITE LOG" of the system.  
If not, event lists aren't searched.

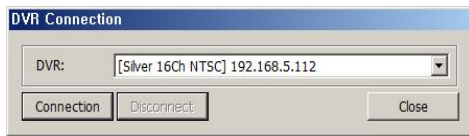
4 Connection Information and Button



Shows DVR's name, IP address and connection status.

Backup play button

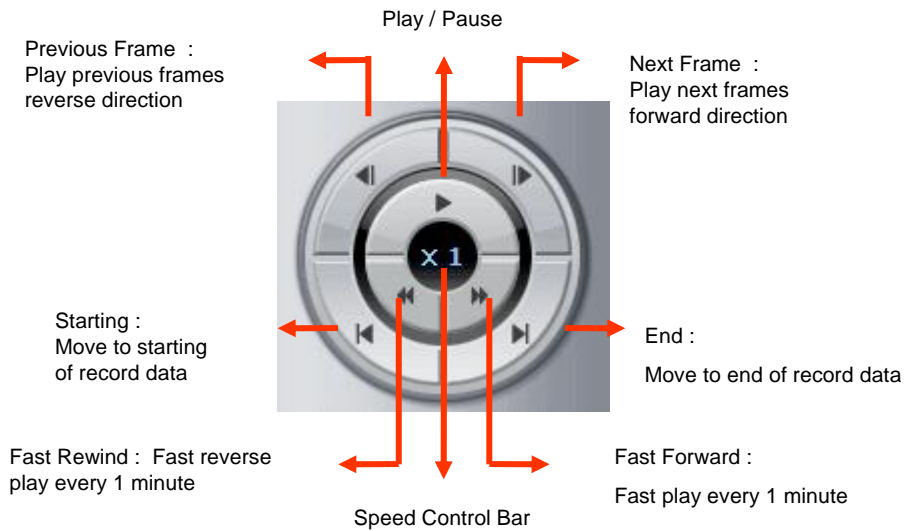
Connect/Disconnect Button :  
Button to connect to other DVR in the saved list



<Connection List Window>

When many DVRs are registered in the DVR list, each DVR can be remotely searched without closing The Remote Program.  
The linked list s can't be edited while search.

5 Playback Button



6 Screen Division Button



Screen Division Button

7 AUDIO Play

Controls audio volume. ✕Audio signal is sent only on one full screen.



Sound volume control gauge



Mute Button :  
Stops audio transmission

8 Image Control Button

Brightness  
Contrast  
Blurring  
Sharpness



**Brightness adjustment button :**  
Adjusts the brightness of playing images.

**Contrast adjustment button :**  
Adjust the contrast of playing images.

**Blurring adjustment button:**  
Adjusts the blurring of playing images.

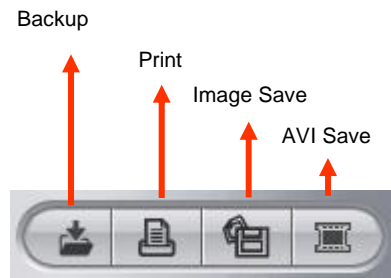
**Sharpness adjustment button:**  
Adjust the sharpness of playing images.

**Zoom Button :**  
Zoom the selected part

**Reset button :**  
Initializes the adjusted image to original image.



## 9 Saving Button

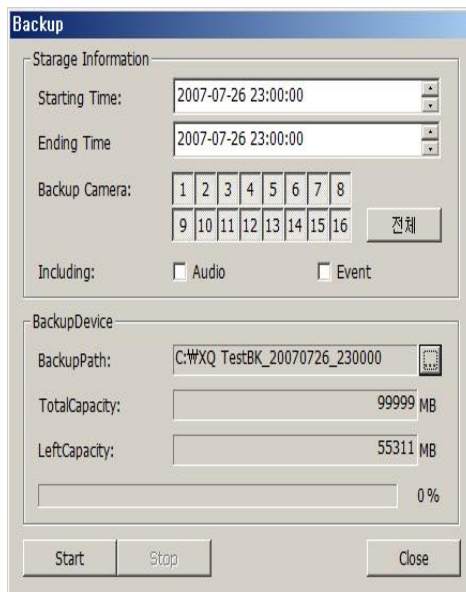


**Back Up :**  
Backup the searched image as compressed image file.

**Print :**  
Print the searched images.

**Image Save :**  
Saves the searched images as Image File.  
(Save JPEG or BMP)

**AVI Save :**  
Saves the searched images as AVI file.



**Storage Information :**  
Select start and end time to backup image.

**Backup Camera :**  
Select the camera to backup

**Including :**  
Selects audio and event to include.

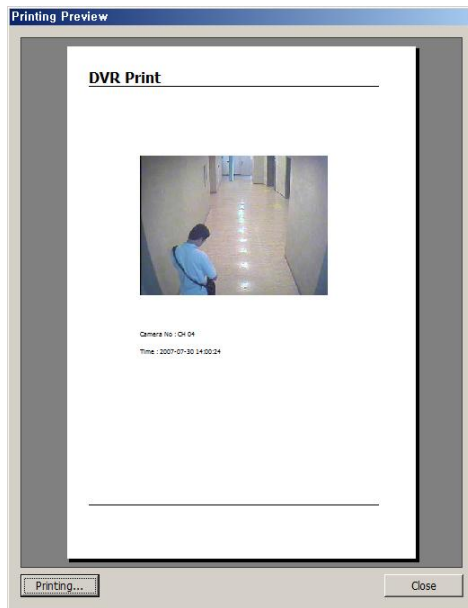
**Backup Path :**  
Selects the path to backup

**Total Capacity :**  
Shows total capacity

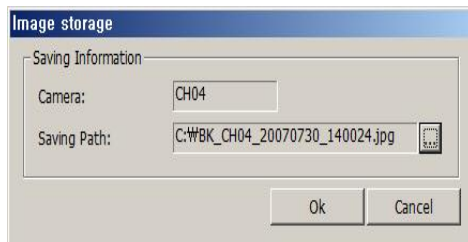
**Used Capacity :**  
Shows used capacity

**Left Capacity :**  
Shows remaining capacity

<Backup Window>



&lt;Preview Window&gt;



&lt;Image Save Window&gt;

**Preview :**

Preview of the images to print, which is printed with various information written on the bottom of the image.

**Image Format****JPG format :**

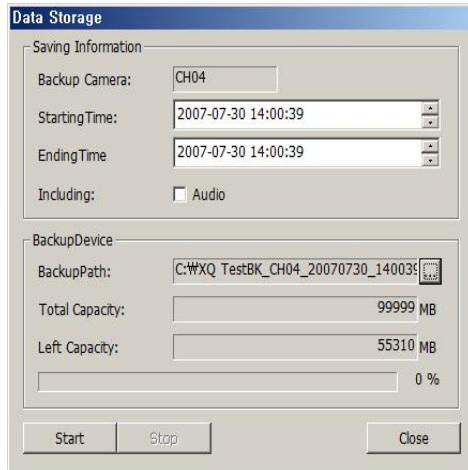
Definition has a little loss due to loss compression method, but archiving size is small.

**BMP format :**

Archiving size is a bit big due to no compression, but it can be saved as higher definition than JPG.

**Saving Path :**

Selects the path to backup.



&lt;AVI Save Window&gt;

**Storage Information**

Selects camera No and start/end time to save.

**Including :**

Selects audio to include.

**Back Up Patch :**

Selects the path to backup

**Total Capacity :**

Shows total capacity

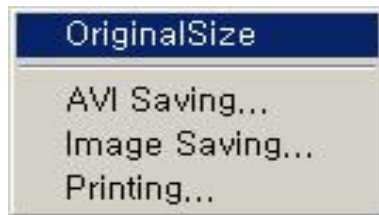
**Left Capacity :**

Shows remaining capacity

Check "Caption option" of Media Player to display time/date of playing AVI file.

### 10 Right Mouse Click Action

When the right button is clicked, the following menu below appears and the following functions can be used



Original Size : Shows original size.

AVI Saving :  
Starts to save AVI file

✘ **Audio signal is save only on full screen.**

Image Saving.. : Save image of the selected camera (Save JPEG or BMP)

Printing.. : Print current image of the camera

## 11 Time Table

Selects year/month/day and hour/minute to search the recorded data.



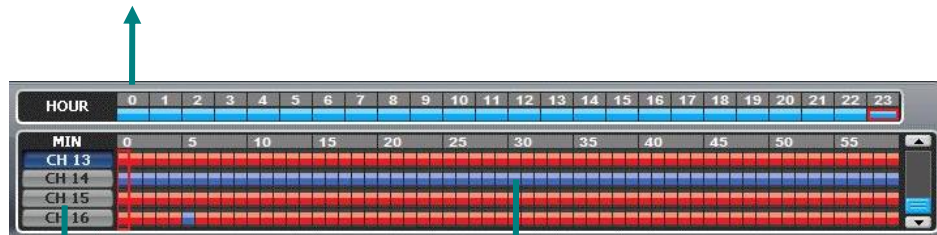
**Year/Month Select Button :**  
Button to move previous and next month.

**Recorded Date (Blue) :**  
Shows recorded date in blue.

**Current Date (Blue Round) :**  
Shows current date in blue round.

**No Recorded Date (Black) :**  
Shows no recorded data in black.

**Timeline Display :** Displays in 24 hours system and one each line is 1 hour unit.



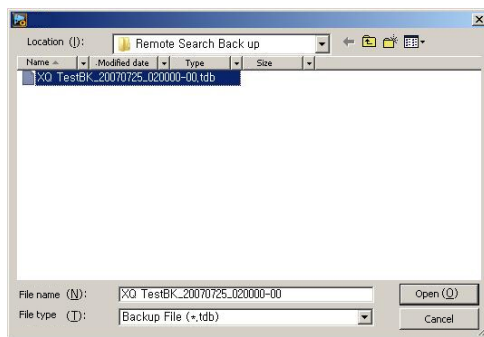
**Camera Selection Button :**  
Select the camera.

**Minute selection Pointer::**  
Select the minute.

## 12 Backup Playback



**Backup Playback Button :**  
Click to backup playback

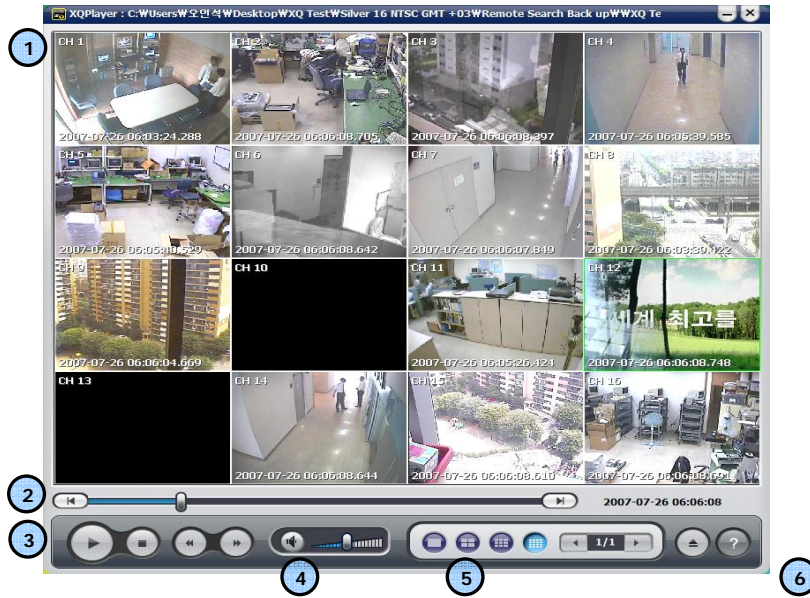


Select the backup data to play.

**Backup playback can play a data of Image file.**

**Windows Media Player can play a data of AVI image files .**

PLAYER

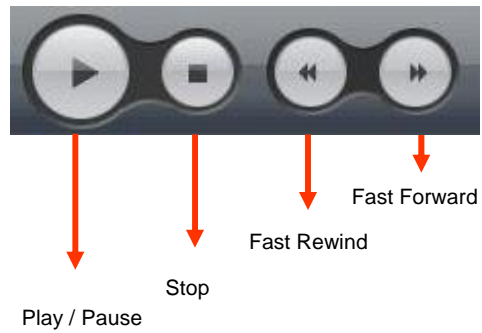


1 Search screen



2 Starting/End



**3 Play button****4 Sound volume Control Button**

※Audio signal is sent only on one full screen.

**5 Layout Button**

**Layout button** : Button to select screen division mode .

6 Call function/Program Info

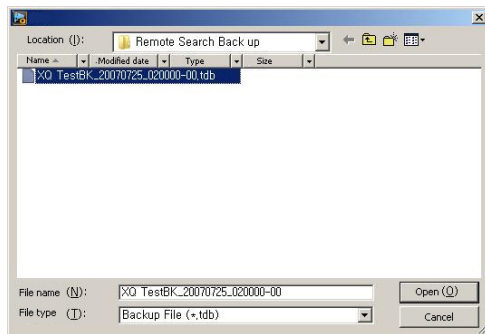


**Information :**  
Shows program information.



<Program Info Window>

**Call Function Button :**  
Button to call in the back up file.



Select the backup data to play

**Backup playback can play a data of Image file.**

**Windows Media Player can play a data of AVI image files .**



---

## Program execution

### ➤ Login



A screenshot of a 'User Authentication' dialog box. The dialog has a blue title bar with the text 'User Authentication'. Inside, there are two text input fields: the first is labeled 'User:' and the second is labeled 'Password:'. Below the input fields are two buttons: 'Confirm' on the left and 'Cancel' on the right.

When program is first executed, puts in ID, Password  
Default – ID: admin , Password: 1.

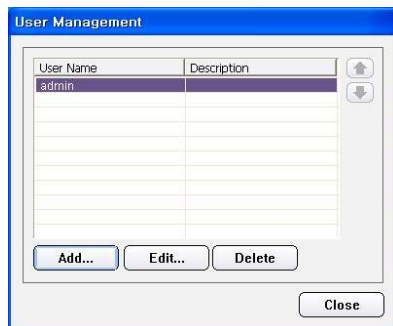
**CMS Main screen**



**1 Function button**



**1 User Management**



Add, edit, delete of CMS account.

➤Add: add CMS user

➤Edit: revise user ID, PASSWORD

➤Delete: delete user

---

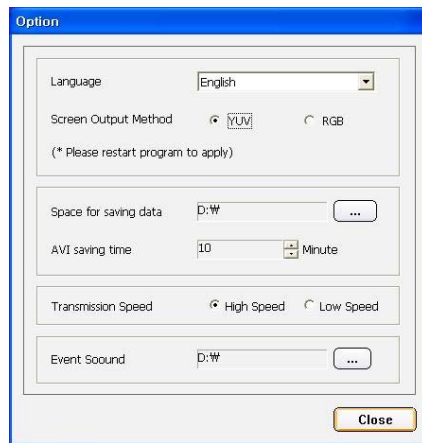
**▣ CMS System Requirements**

OS	Win 2000 / Win XP / Win Vista
CPU	INTEL P-4 2.4Ghz or over(recommendsP-4 3Ghz,over )
Main Memory	512MByte or over (recommends 1Gbyte,over)
Video Memory	64M over supports RGB (recommends 128Mbyte over)
Resolution	1024*768 over
Lan Card	10/100 Supporting card
Protocol	TCP/IP



<Use management add/modify >

## 2 Option management



<Option management>

- User name :  
Type the user name authorized in DVR
- Password:  
Type the password authorized in DVR
- User explain:  
Shows the user information

➤ **Language : To choose program' language.**

➤ **Video output : ATI YUV mode** : According to your PC graphic card ability, the support can be decided. This mode shows faster, clear ability of image transmission than RGB mode.

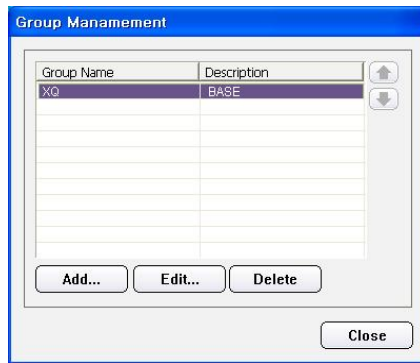
➤ **RGB mode : nVidia**  
It is widely compatible with most graphic cards, and select this when YUV mode is not supported.

✘ Above setting value will apply after restarting of the program.

### <Recommended Graphic Card>

ATI series : Radeon7000 series (More than 32M, more than 64M recommendable), RADEON series...  
 NVIDIA series : More than M64 series (Min over 32M, more than 64M recommendable), GEFORCE series  
 Etc :VGA card to support YUV mode... , Recommended 2 times memory when dual monitor is used.

- **Date save place**  
Sets ups basic path of AVI file to save
- **AVI Saving time**  
Sets up saving time of AVI file from CMS.
- **Network Speed**  
High Speed : System sends off images at high speed possible.  
Low Speed : System sends off image at normal speed in consideration of stability.
- **Event Sound**  
Set ups sound file (\*.wav), when the event occurs.

**3 Group management**

Add, modify and delete a group in DVR

- **Add...** : Add a group information
- **Modify...**: Modify a group information
- **Delete** : Delete existing group information.



- **Group name** :  
Specify a group name in DVR
- **Group information**:  
Specify a group information

※ To register DVR , you need to register a group first.

## 4 DVR Management

DVR Name	Group Name	IP Address
192.168.5.112	XQ	192.168.5.112

Buttons: Add..., Edit..., Delete, Close

Add /modify/Delete DVR connection in the CMS

- Add : Enter IP address and user authentication to connect DVR
- Modify : Modify IP address and user authentication of the existing list
- Delete : Delete existing use.

Fields: DVR Name, Group (XQ), Address, Service Port (9013), User Name, Password

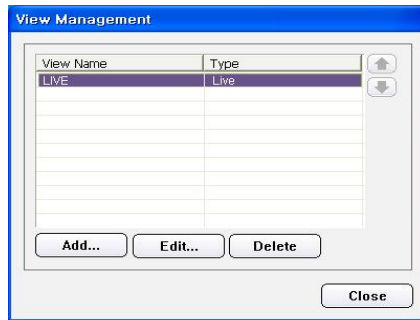
Checkbox:  Bundle Connectic

Buttons: Confirm, Cancel

- DVR name: Specify a name that you can easily identify.
- Group : Select the DVR group
- Address : IP address to connect (type IP or DDNS Host Name)
- Service port : Set service port same to DVR's one
- User name: Type user name of DVR authorized

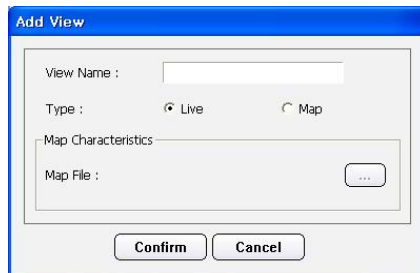
- Password : Type password to DVR authorized .
- Connect all : connect all when it connects

## 5 VIEW Management



Adds, edits, deletes Live/ E-map showed in CMS

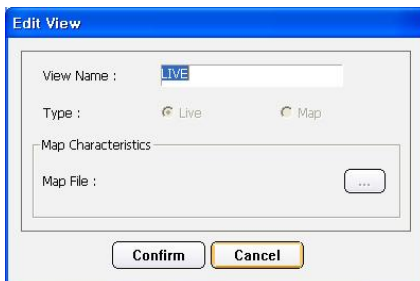
- **Add...** : add View information
- **Edit...** : edit View information
- **Delete** : delete View information



➤ View name :  
put in any name for user to know easy

➤ kinds :  
select LIVE or MAP

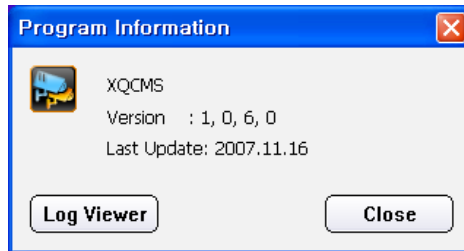
➤ Map file :  
In case the View is map, select to be used image



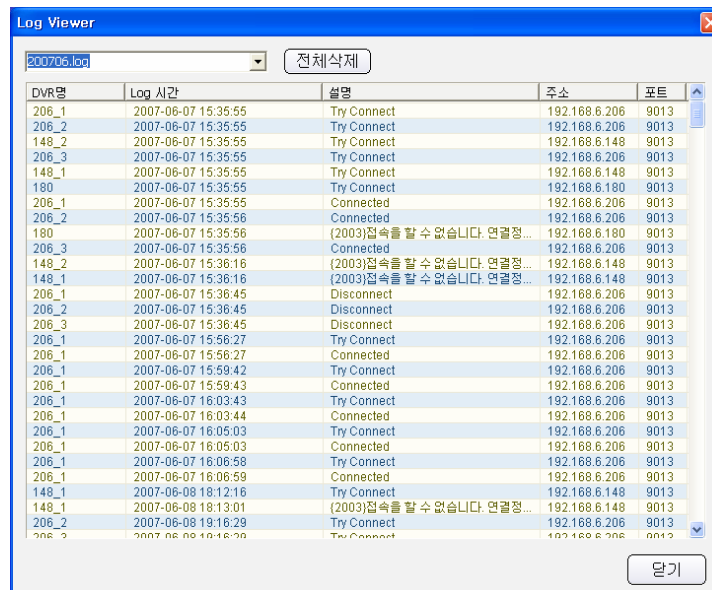
➤ View name :  
put in any name for user to know easy

➤ Map file :  
In case the View is map, select to be used image

## 8 Program Information



Available to run the Log Viewer of the version and updated Information on CMS.



### Log Viewer

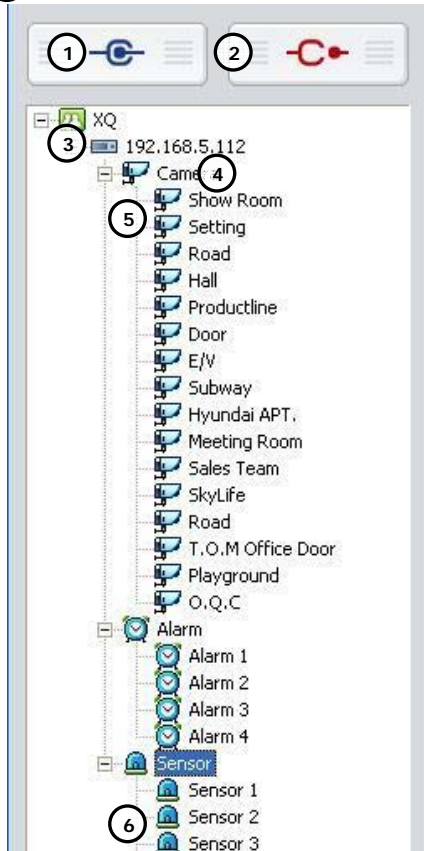
By CMS, it makes the log of time, IP address, connecting port and status on connecting system.

## 9 Program Exit

It exits CMS.



**2 DVR Tree**



**1 All Connection**

It connects all DVRs nominated on the DVR information.



**2 All Disconnection**

It disconnects all DVRs connected on the DVR information.

**3 Group**





Indication of the Group of the DVR

**4 DVR**

-  Indication of disconnect DVR
-  Indication of connect DVR




**5 Camera**

Making the camera icons enabled, on connected with the DVR.

-  Indication of the camera status disconnected with the DVR
-  Indication of the camera status connected with the DV
-  Indication of camera status on the motion detection
-  Indication of camera status on the video loss

**6 Sensor**

Making the sensor icons enabled, on connected with the DVR

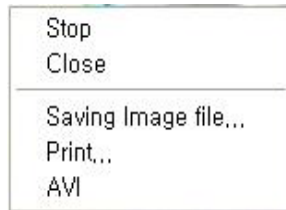
-  Indication of the sensor status disconnected with the DVR
-  Indication of the sensor status connected with the DVR
-  Indication of sensor status on the sensor detection

3 Main Screen

1 Live Screen



- 1 Channel name
- 2 Recording Status
- 3 DVR name
- 4 Current time



- Pop-up menu on clicking the right button of mouse,
- Stop : Temporary stops the current image of live view.
  - Close: On the live view, it deletes the live channel.
  - Image storage : Storage of the current live view as the image.
  - Print: Printing out the current live view.
  - AVI : Storage of the current live view as AVI file.

**<AVI Storage>**  
 On storing AVI, it stops the archive automatically by the setup time on the option, without any stop order.

4 Screen Splitting Button



It supports up to 64 screen splitting.

• Full Screen Button



It shows the view of live screen. .

5 Screen Movement Button



On the splitting live screen, it moves the next or the before.

6 PTZ



PTZ Disabled



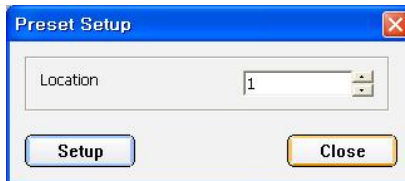
PTZ Enabled

On clicking the PTZ button, the PTZ control panel appears. If the selected camera has the disabled setting of PTZ, it will be disabled status like No.1pic. If not, it will be enabled status like No.2pic.



1 Preset Movement

It makes the preset moved to the selected area.



2 Preset Setup

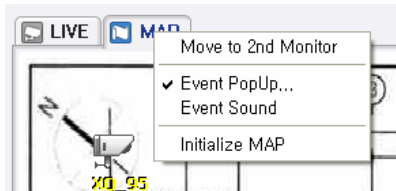
It sets up the preset to the selected area.

## 7 E-Map



- ① Enabled camera connected with DVR
- ② Live view of selected camera
- ③ Sensor Detection of DVR
- ④ Motion detection of the camera connected with DVR
- ⑤ Disabled camera connected with DVR
- ⑥ It makes other maps connected (Map Link)

## Usage of Dual Monitor



On clicking the right button of mouse on the E-map tab, the pop-up appears.

➤Dual monitor movement

On the dual monitor function, the selected map is moved to the second monitor.

➤Event pop-up

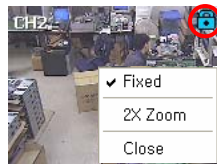
On detecting motion, Pop-up automatically.

➤Event sound

On detecting event, the sound (that is set up on the option) happens.

➤Initialize map

Initializing the map screen.



Fixed Screen



Released Screen

Pop-up screen Window pop-up menu

➤Fixed

On selecting it, the live pop-up window is fixed. Unless fixed, the screen will be closed automatically any times later. If fixed, the lock image will be shown on the right top of screen.

➤Zoom-in double times.

Zoom-in of live pop-up window by double-times.

➤Close

Closing the live pop-up window.